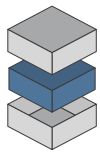
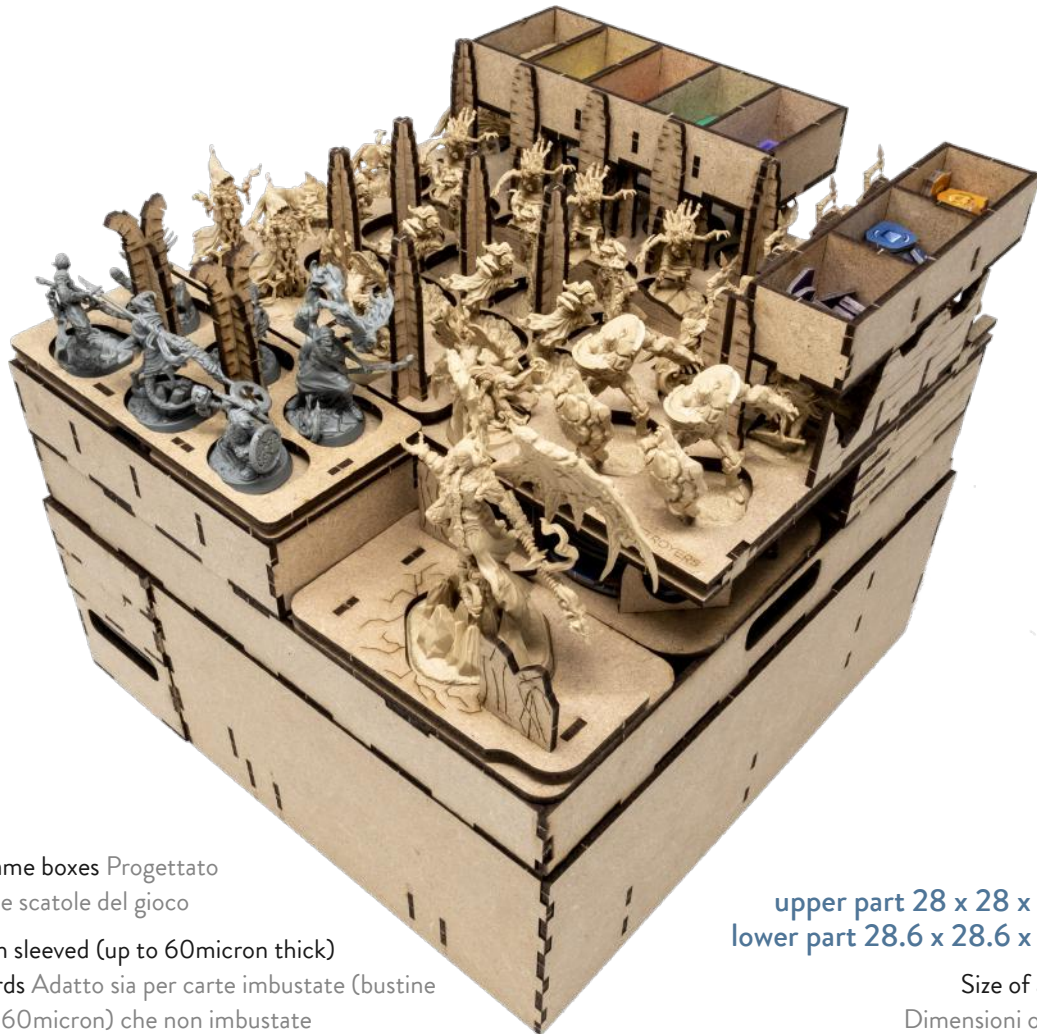


ORGANIZER - COMPATIBLE WITH DESCENT: LEGENDS OF THE DARK



Designed to fit into the game boxes Progettato per inserirsi all'interno delle scatole del gioco



Designed for both sleeved (up to 60micron thick) and unsleeved cards Adatto sia per carte imbustate (bustine di spessore fino a 60micron) che non imbustate

279



Pieces to assemble
Pezzi da assemblare

upper part 28 x 28 x 14.6 cm
lower part 28.6 x 28.6 x 10.7 cm



Size of assembled organiser
Dimensioni organizer assemblato

ORGANIZER CAPACITY

Upper Part: 3x figure holders for villains and heroes; 2x token holders, with dedicated slots; 2x card holders, with dedicated slots; 1x dice launch and storage tray; 1x HP dial tray; 1x tray for map tiles and player boards/terrain tiles. Lower Part: 1x bearing structure, with dedicated slots; 7x boxes, with slots for each object. Parte Superiore: 3x portaminature nemici ed eroi; 2x portatoken, con slot dedicati; 2x portacarte, con slot dedicati; 1x tray per lanciare e conservare i dadi; 1x tray per dial punti ferita; 1x vassoio per tile mappa e schede personaggio/terreni. Parte Inferiore: 1x struttura portante con slot dedicati; 7x contenitori con slot per ogni tipologia di oggetti.



All trademarks and copyrights are the property of their respective owners.

This product is not a toy. Contains small parts that can be swallowed or inhaled. 14+

Any doubt?
Download a full
digital version on
thedictroyers.com

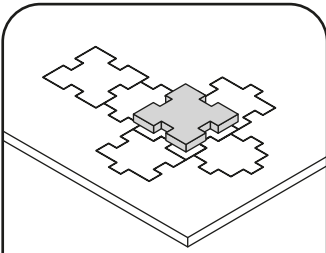


TUTORIAL - THE DICETROYERS DICE!

Among the pieces to assemble, you'll find a dice. This is not part of the organizer, but it can be a good starting point to practice!

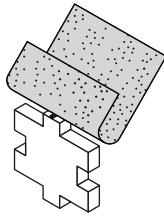
Tra i materiali da assemblare troverai un dado. Questo componente non fa parte dell'organizer, né del gioco, ma è un ottimo punto di partenza per fare un po' di pratica.

1



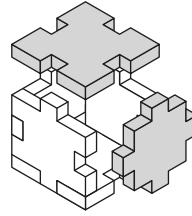
Gently take off
all the pieces.
Stacca delicatamente
dal foglio tutti i pezzi.

2



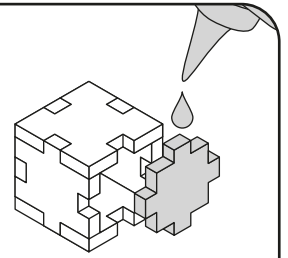
If necessary, use sand paper
to smoothen the borders.
Se necessario rifila con carta
vetrata per legno eventuali
imperfezioni dei pezzi.

3



Get familiar with
all the pieces
and check the correct
assembly sequence.
Prendi familiarità con tutti
i pezzi, per assicurarti
che la sequenza di
assemblaggio sia corretta.

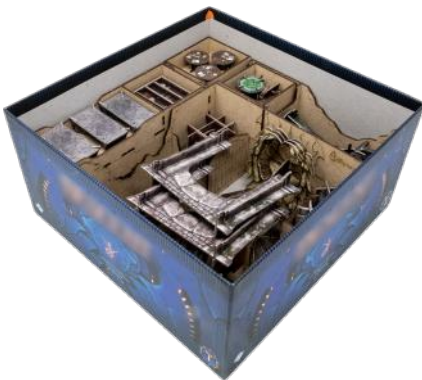
4



Once verified the correct
assembly sequence, just add
a small quantity of PVA glue
on every joint.
Dopo aver verificato
la sequenza di assemblaggio
aggiungi una piccola quantità
di colla vinilica su tutti
gli incastri per garantirne
la durata nel tempo.

INSTRUCTIONS

Lower part
Parte inferiore



A

Dragon + Archways
Drago + Archi

Well
Pozzo

Doors
Porte

Trees
Alberi

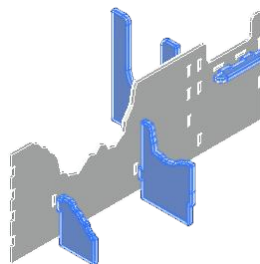
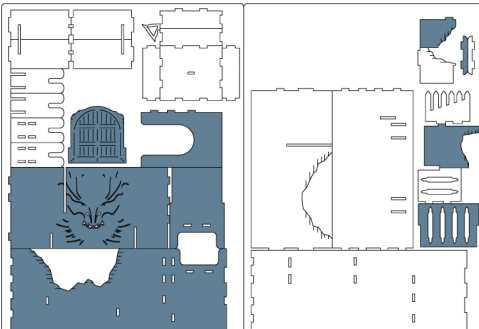
High columns
Colonne alte

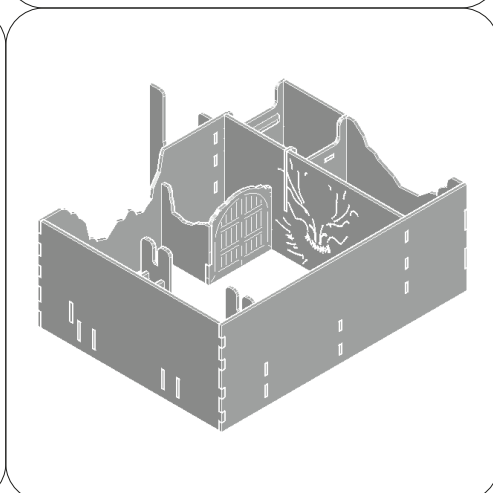
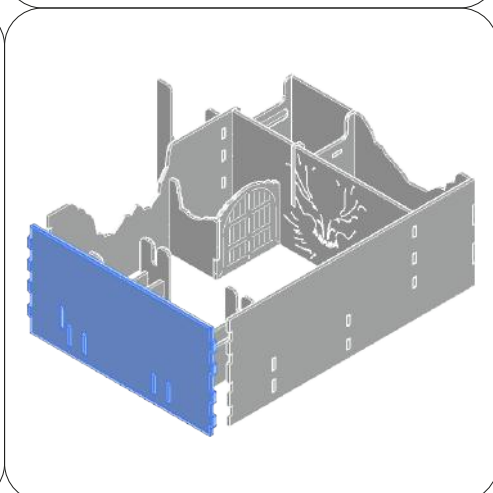
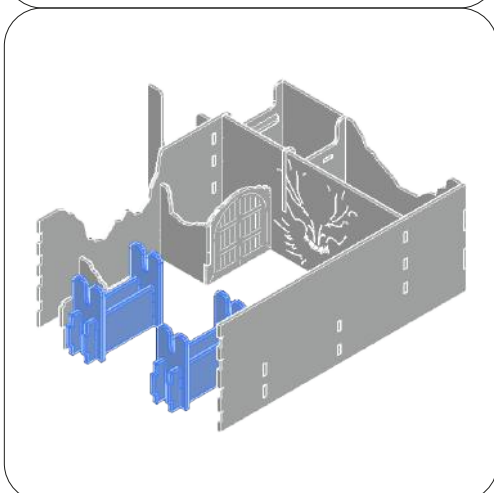
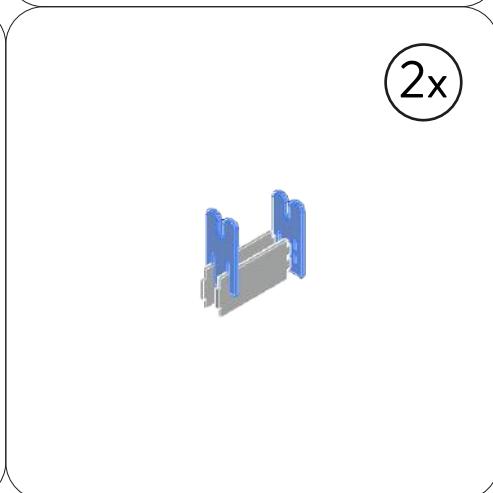
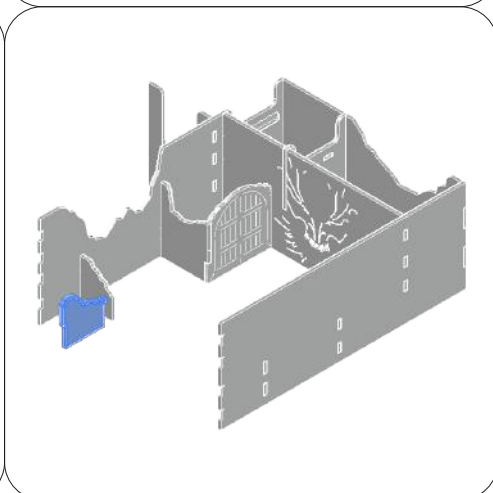
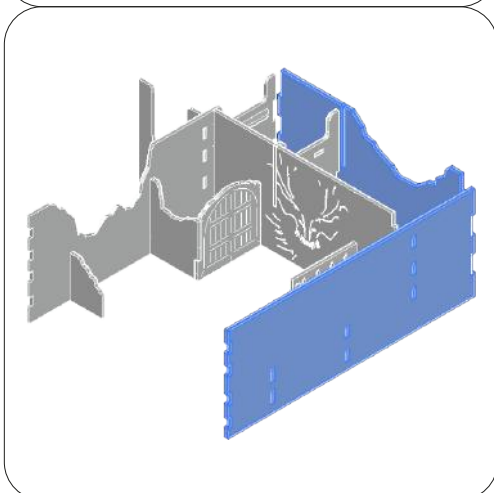
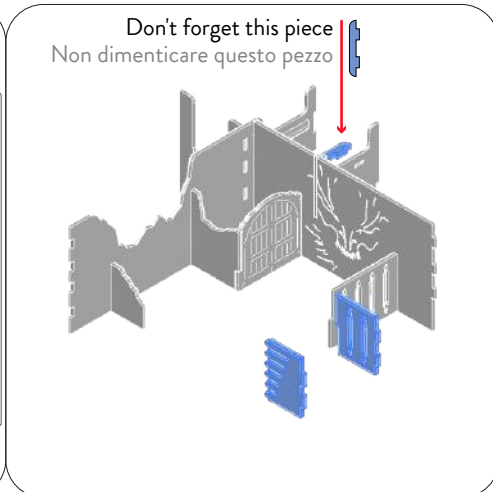
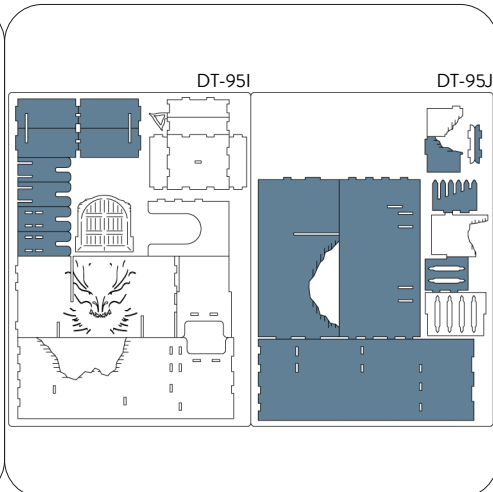
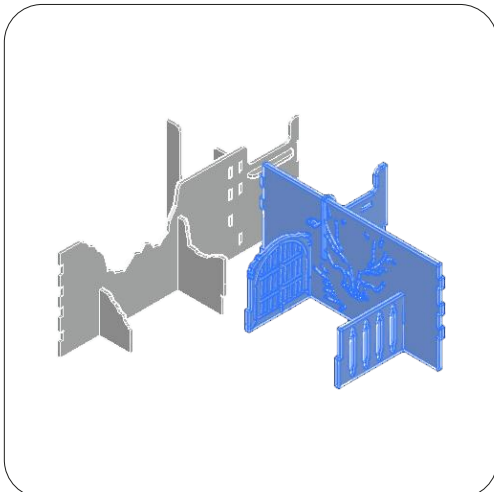
Barricades
Barricate



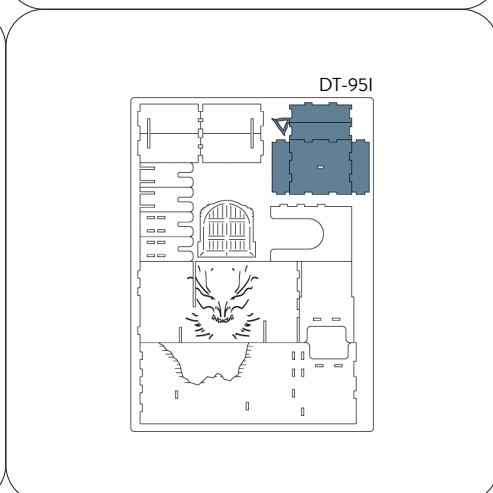
DT-95I

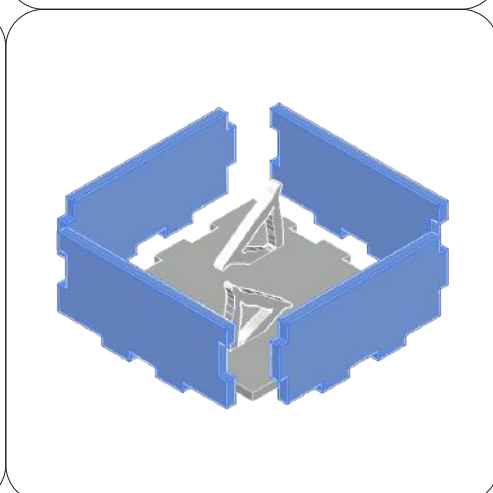
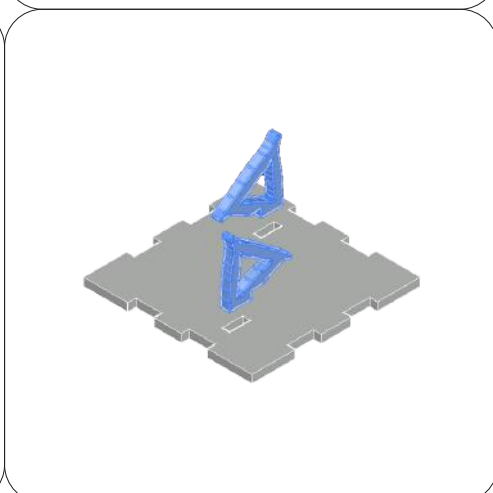
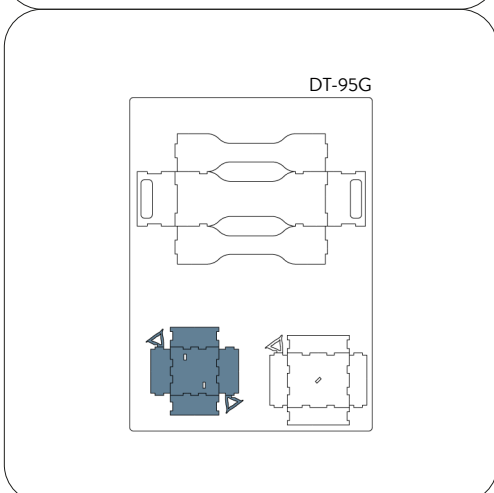
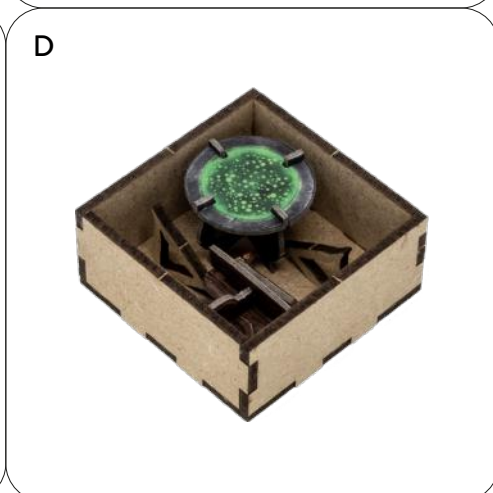
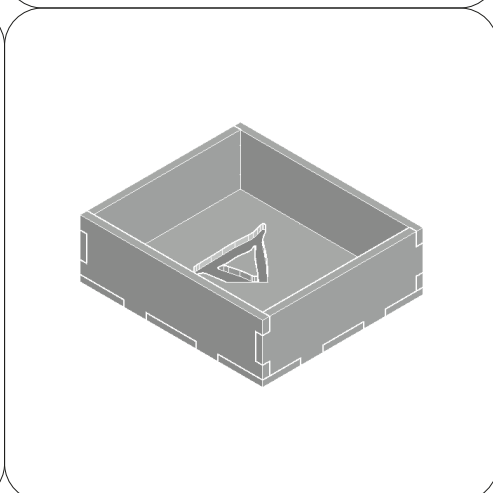
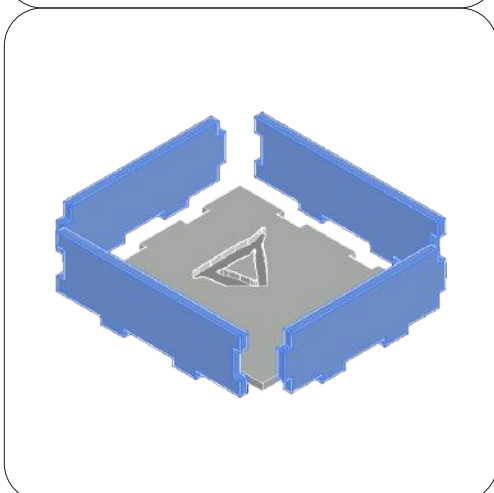
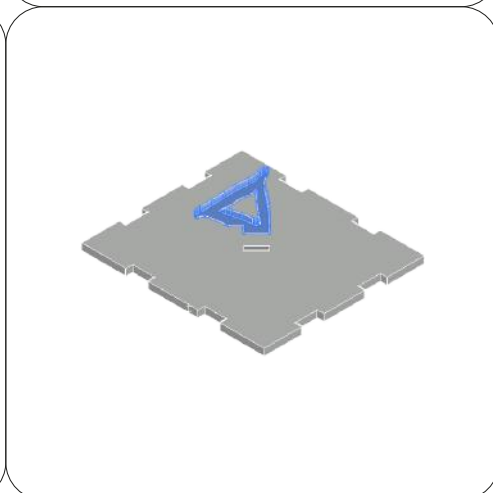
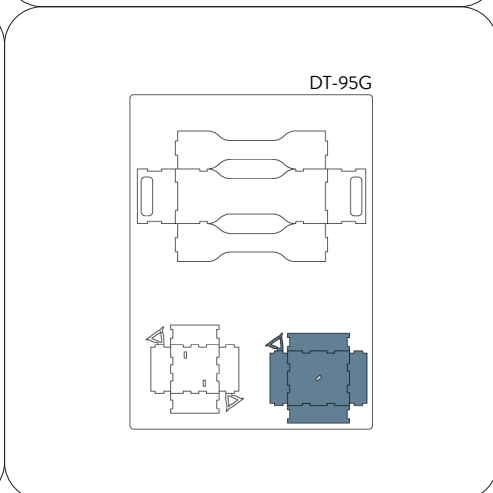
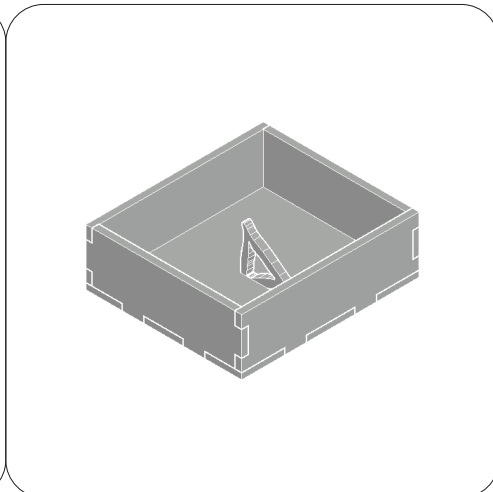
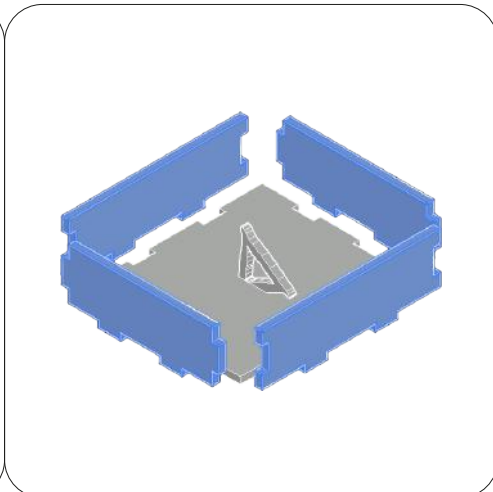
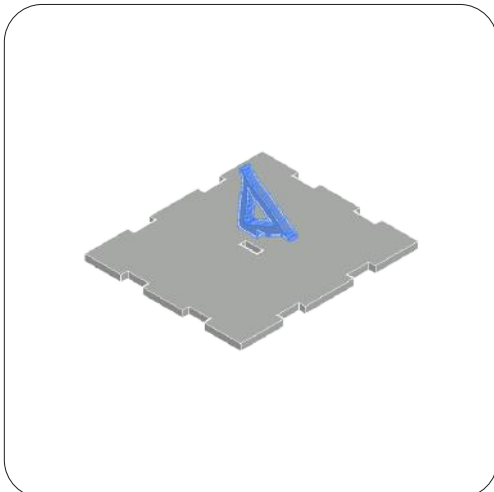
DT-95J

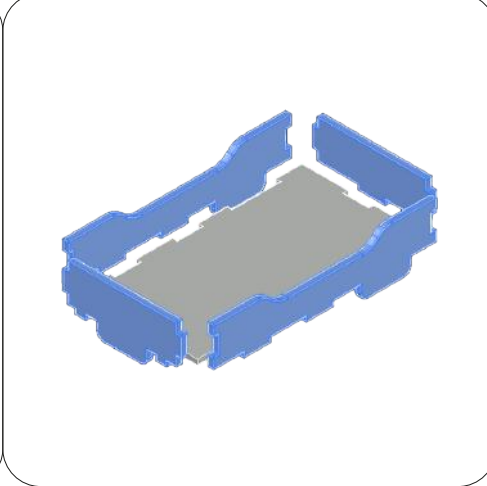
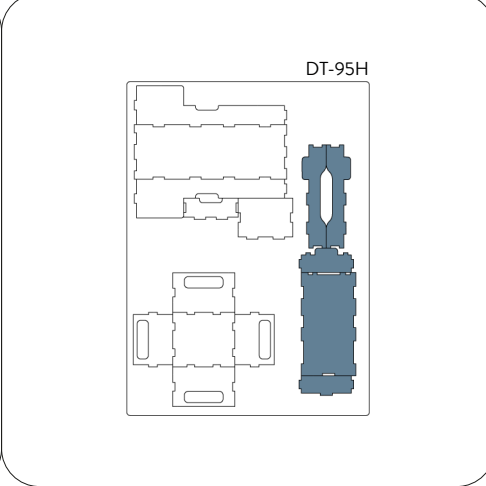
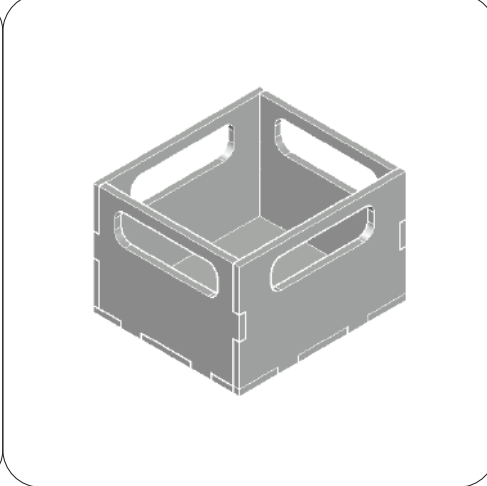
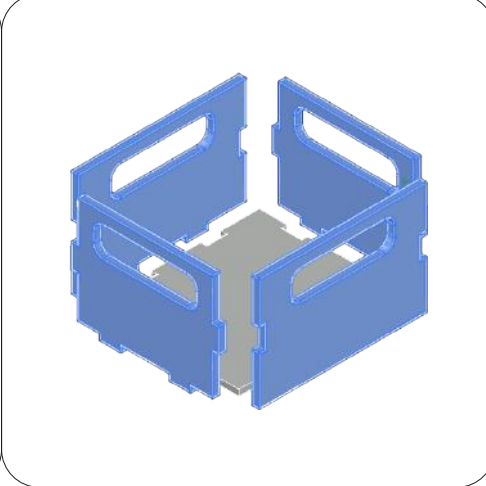
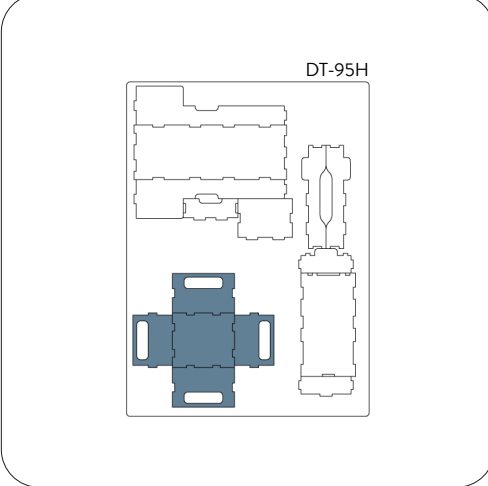
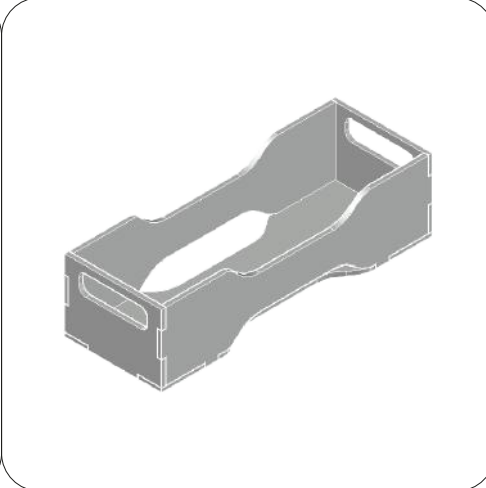
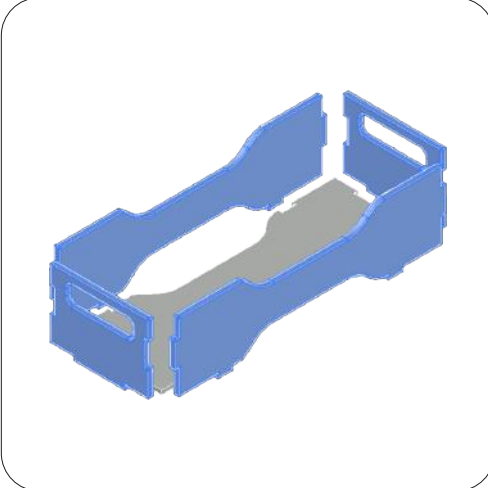
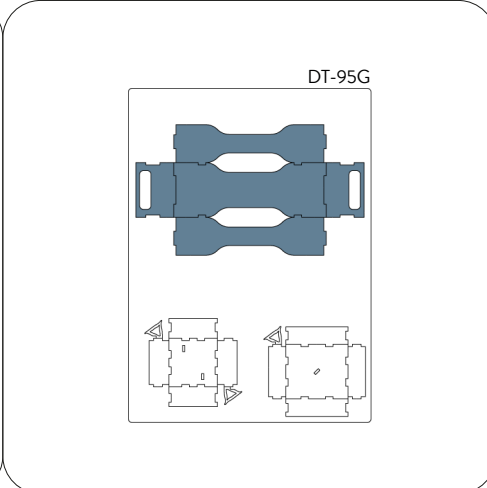
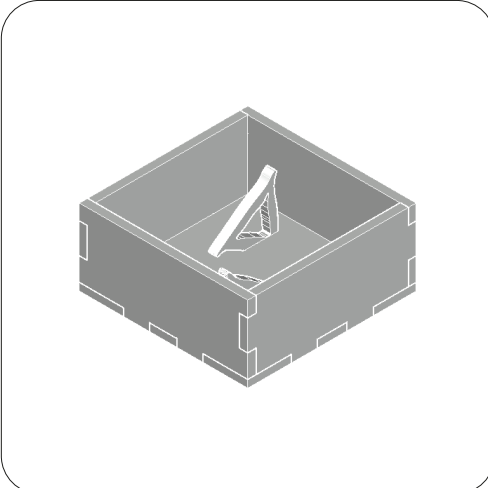


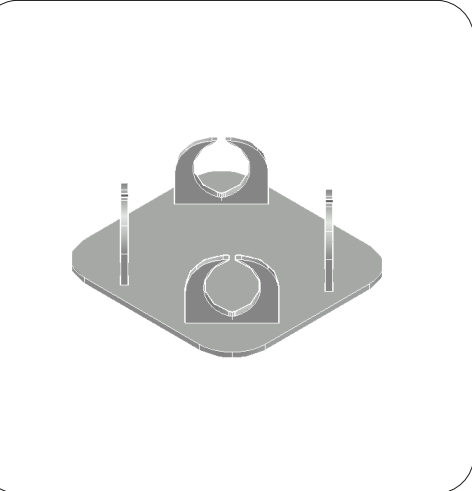
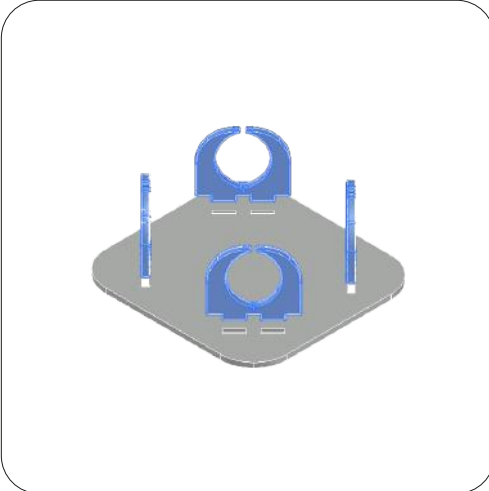
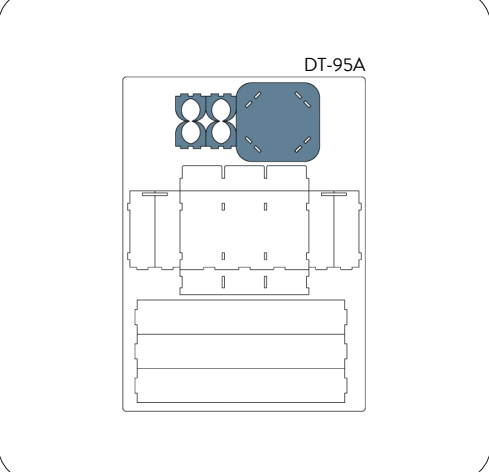
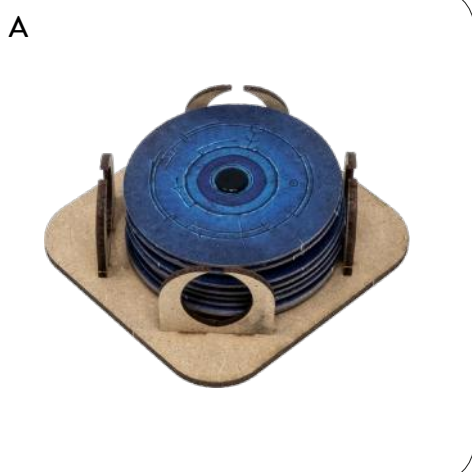
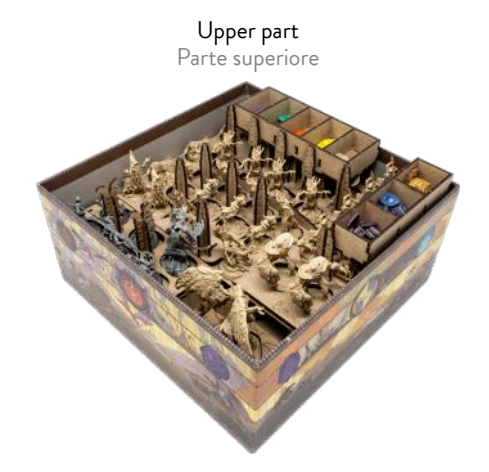
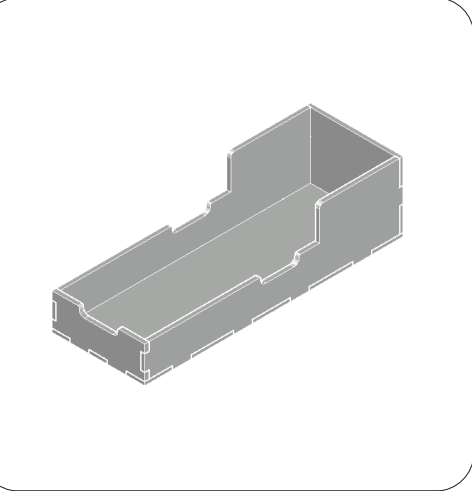
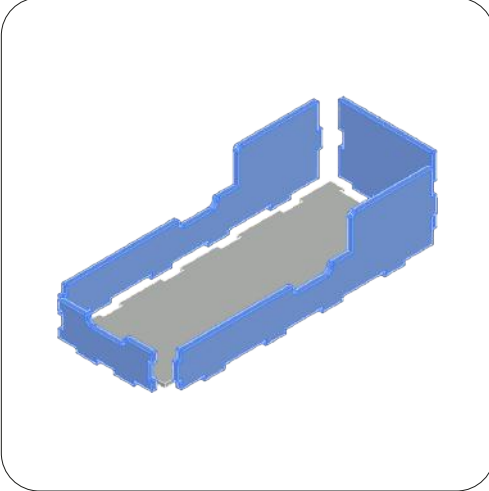
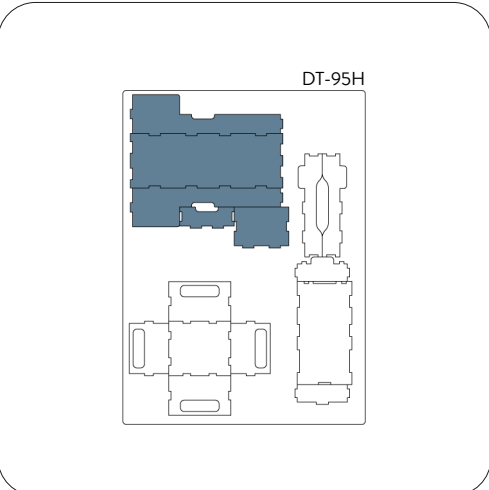
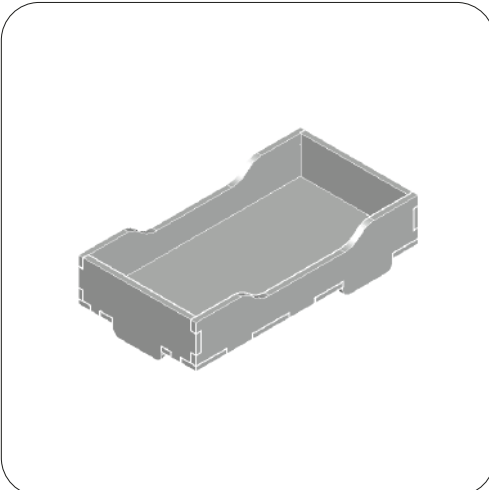


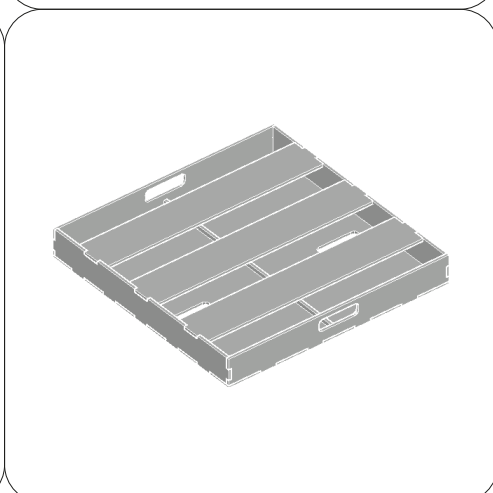
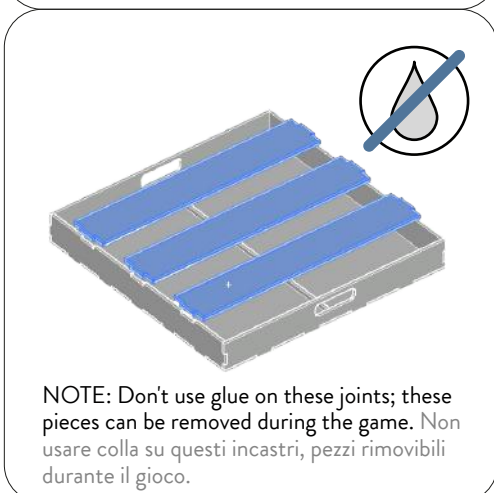
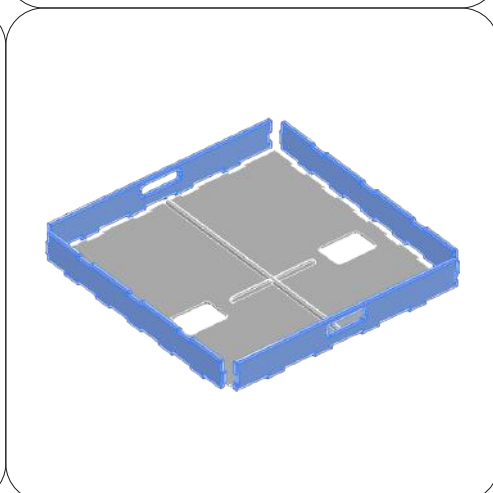
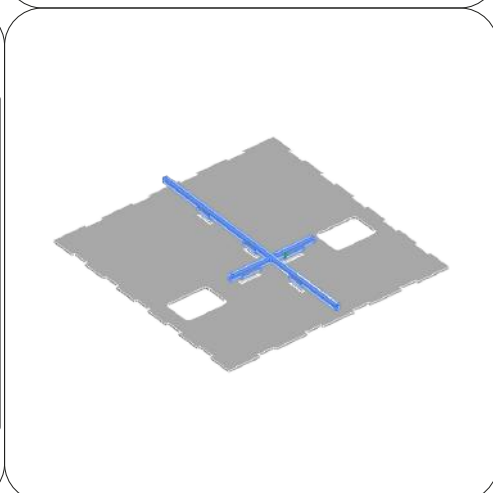
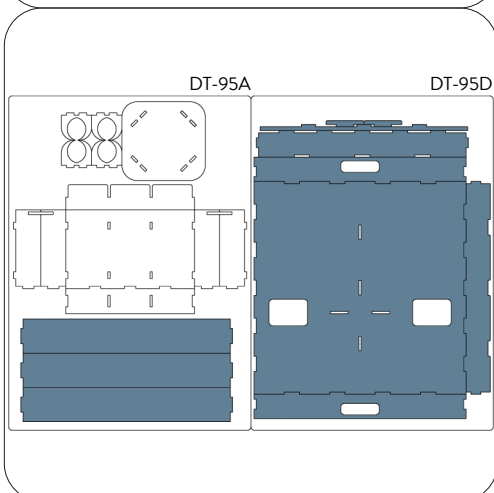
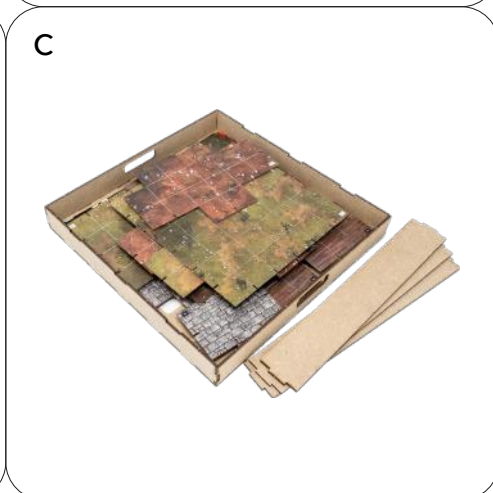
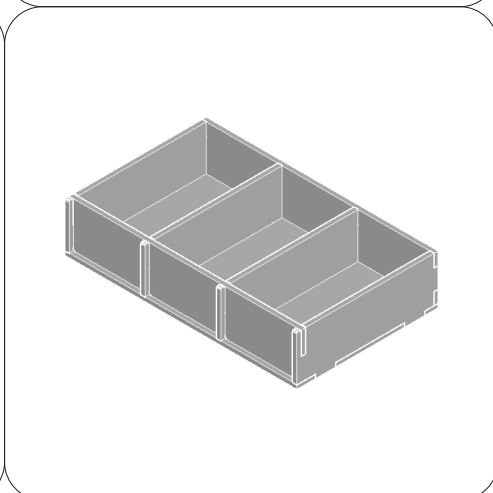
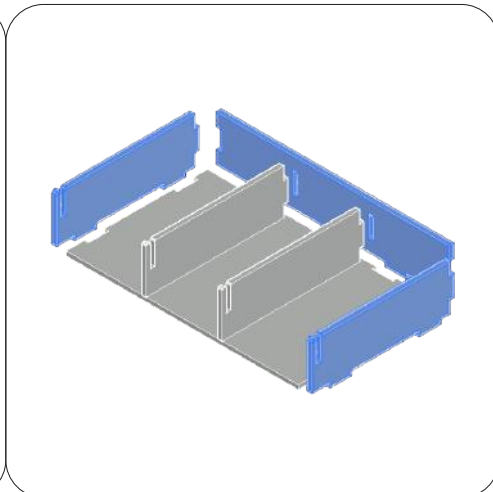
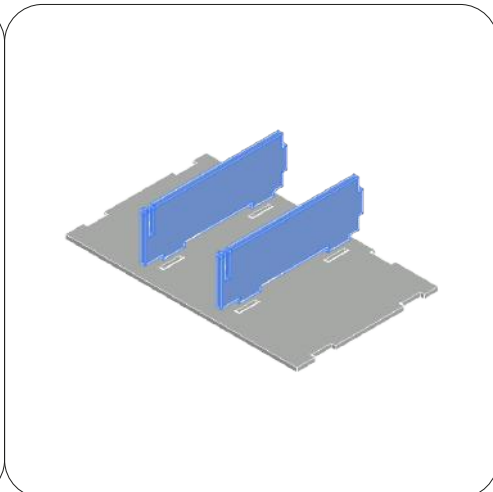
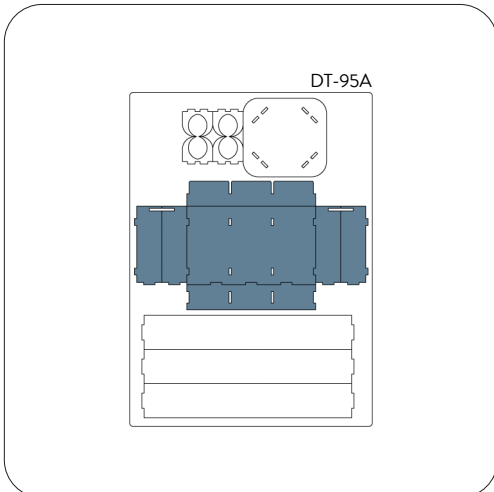
NOTE: Place it on the bottom of the box before inserting the game pieces. Posizionalo sul fondo della scatola prima di inserire i pezzi del gioco.



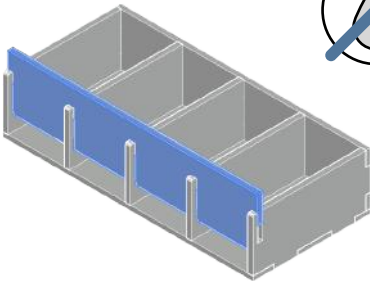
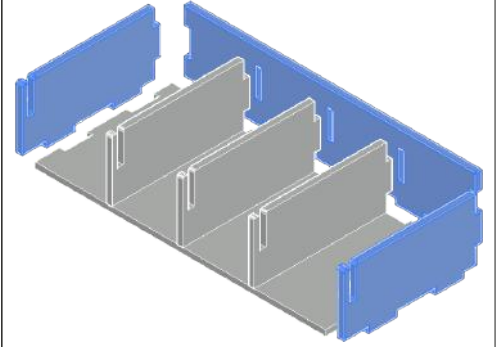
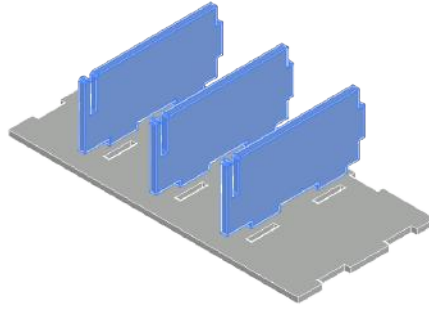
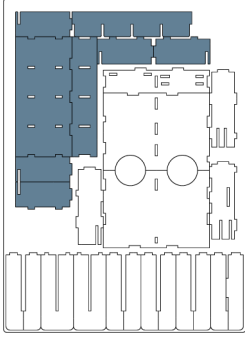




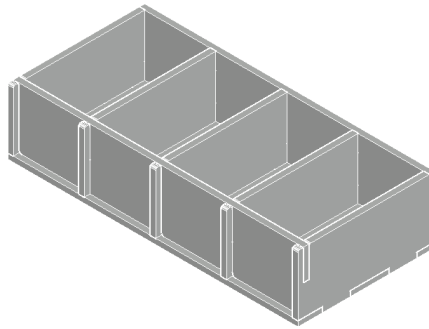




DT-95B



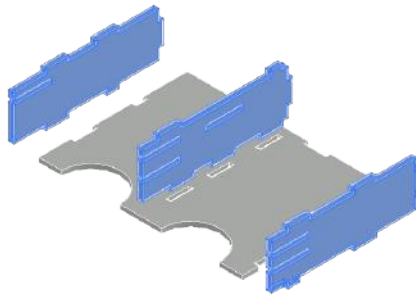
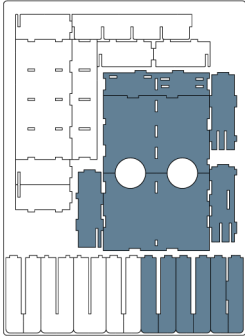
NOTE: Don't use glue on this joint; this piece can be removed during the game. Non usare colla su questo incastro, pezzo rimovibile durante il gioco.



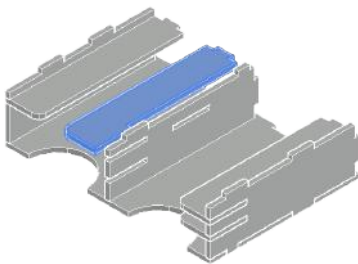
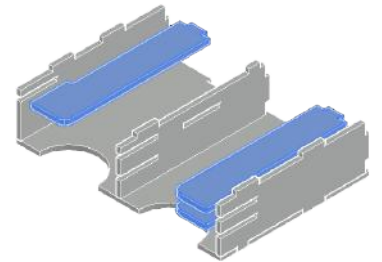
E



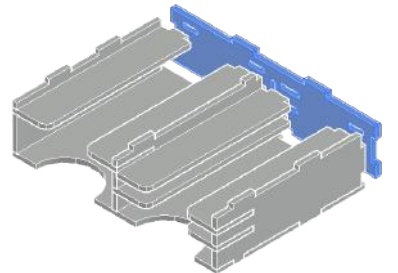
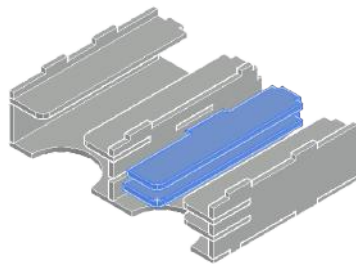
DT-95B

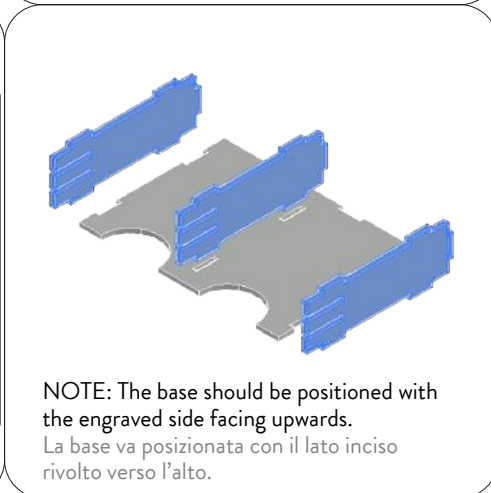
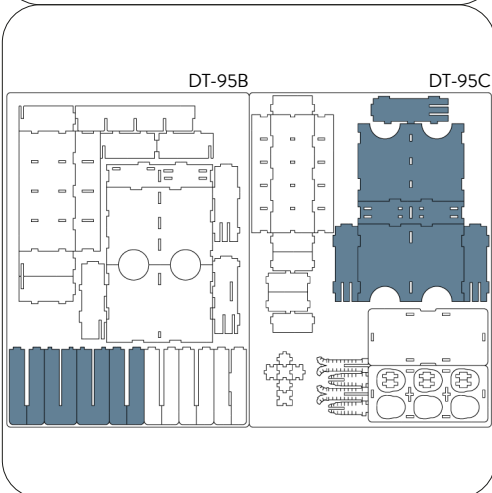
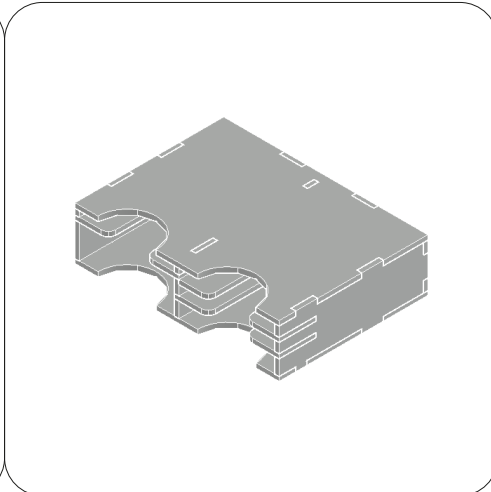
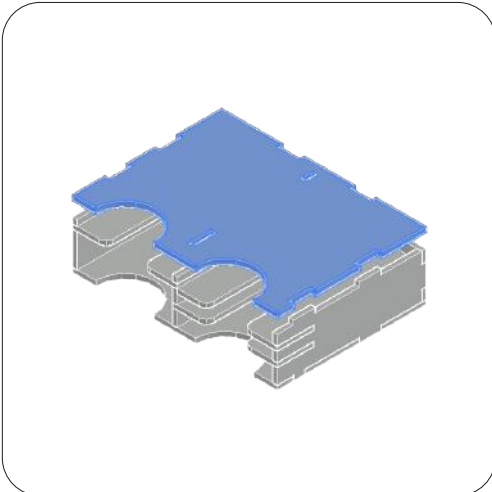


NOTE: The base should be positioned with the engraved side facing upwards.
La base va posizionata con il lato inciso rivolto verso l'alto.

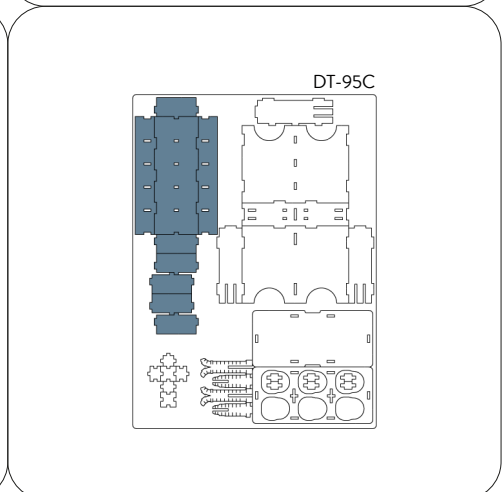
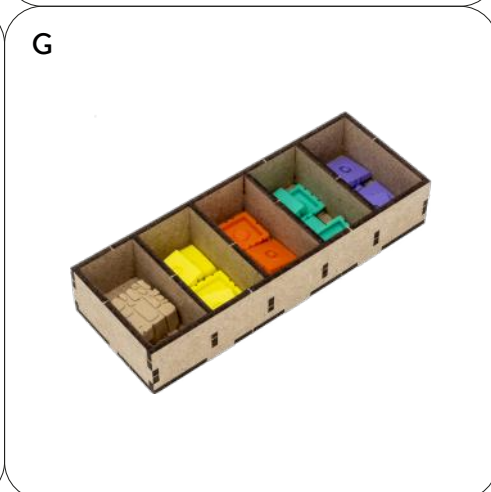
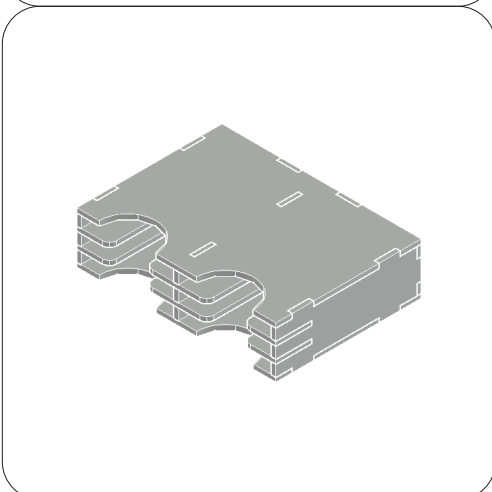
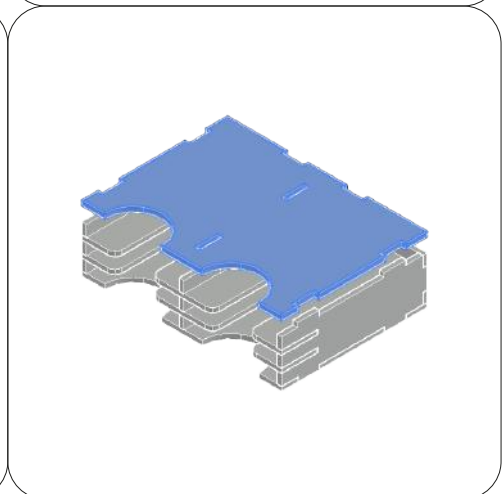
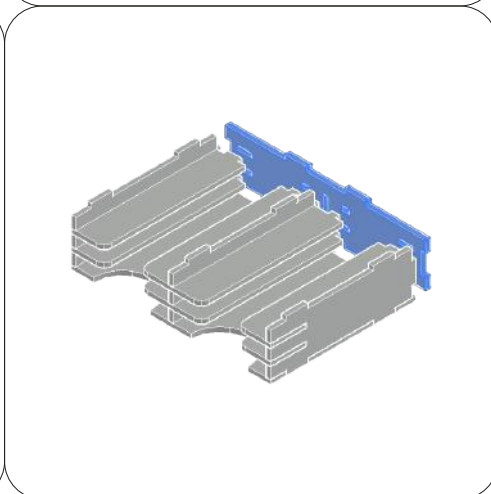
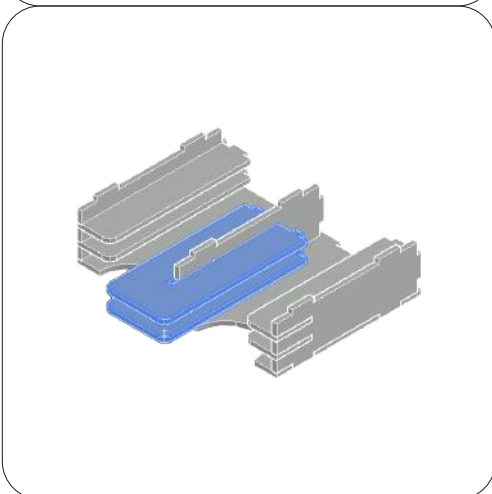
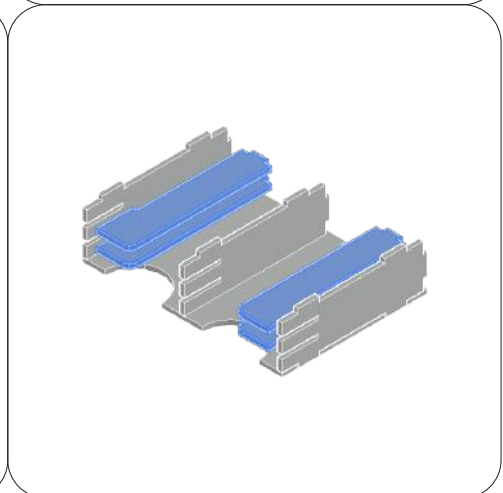


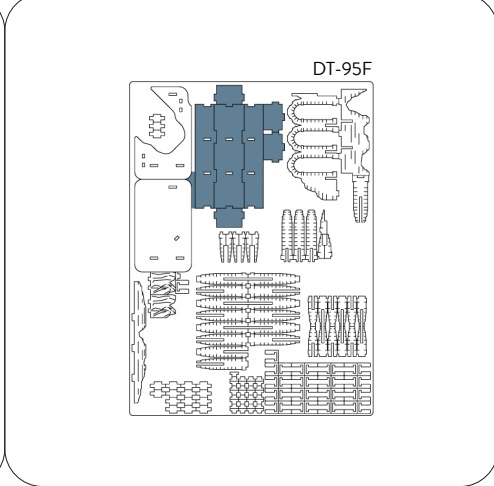
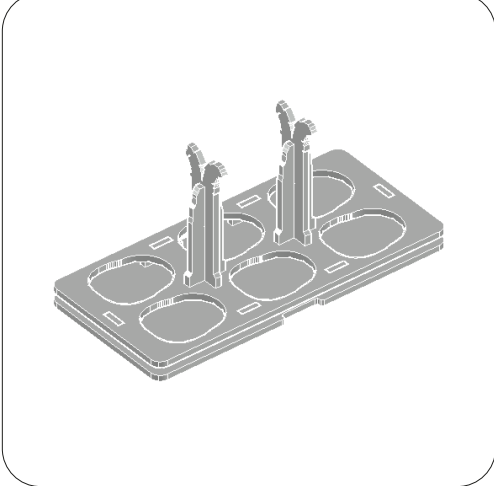
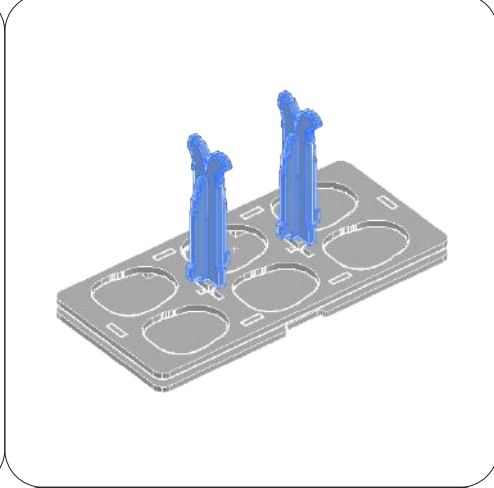
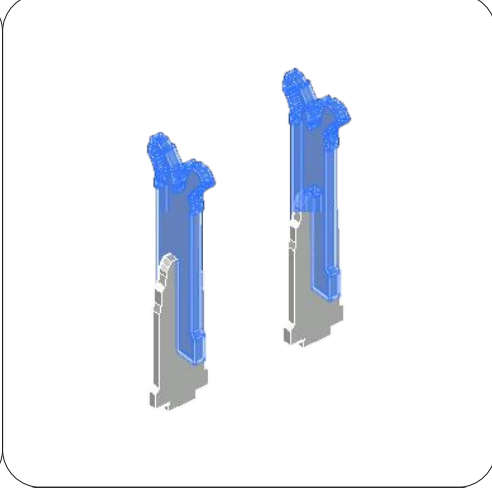
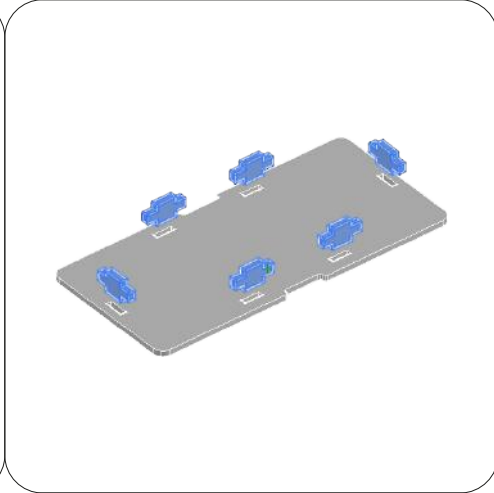
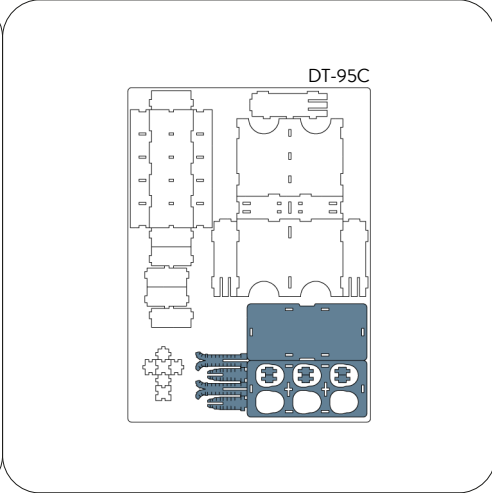
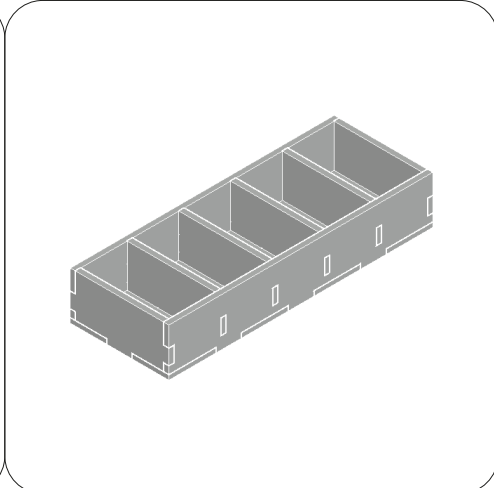
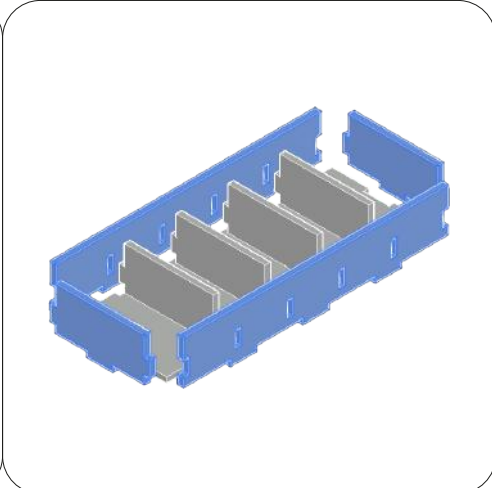
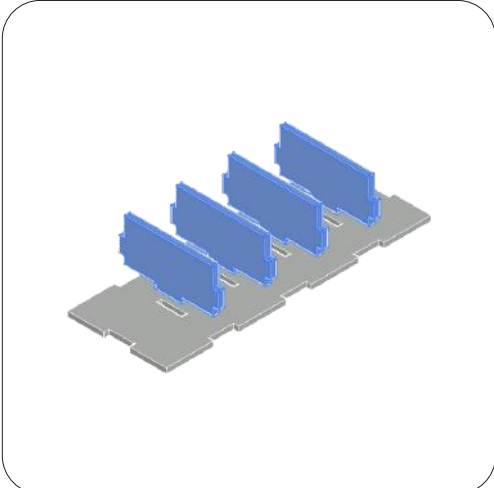
NOTE: Insert this piece in correspondence of the engraved arrow. Inserisci questo pezzo in corrispondenza della freccia incisa.

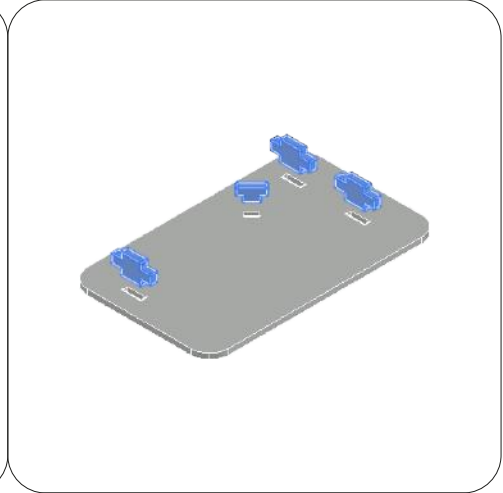
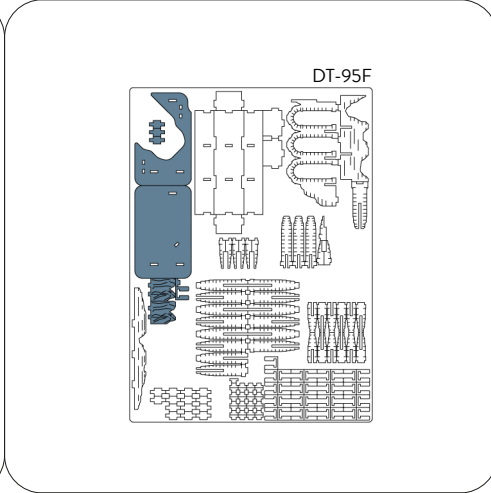
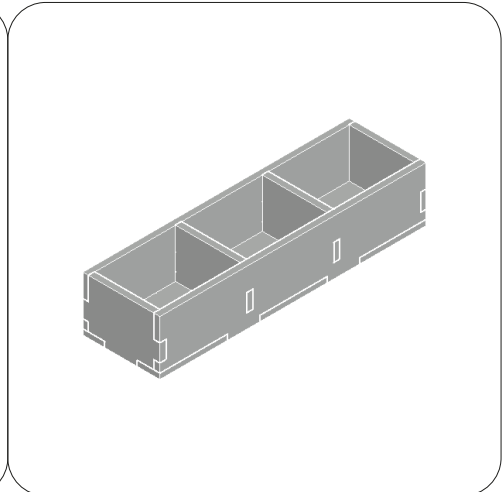
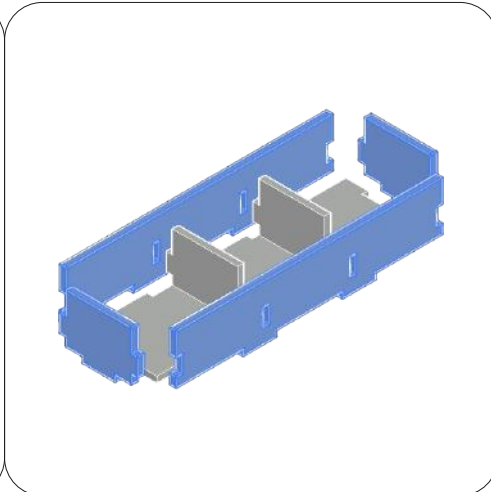
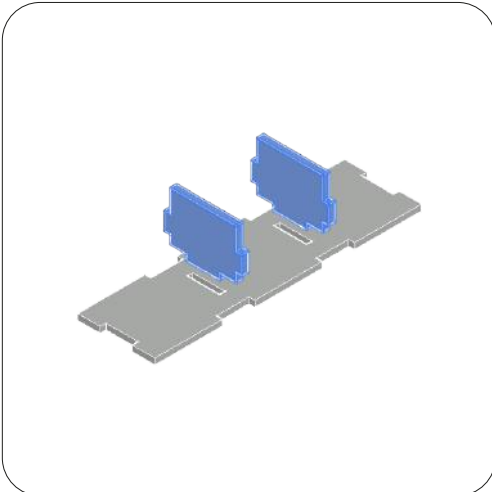




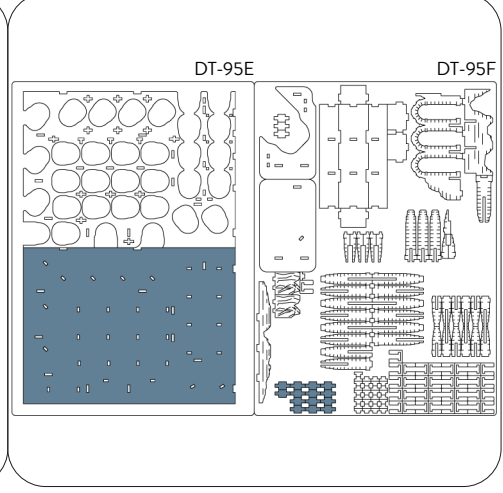
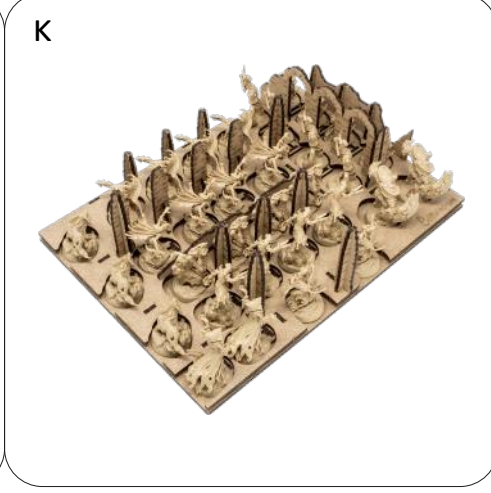
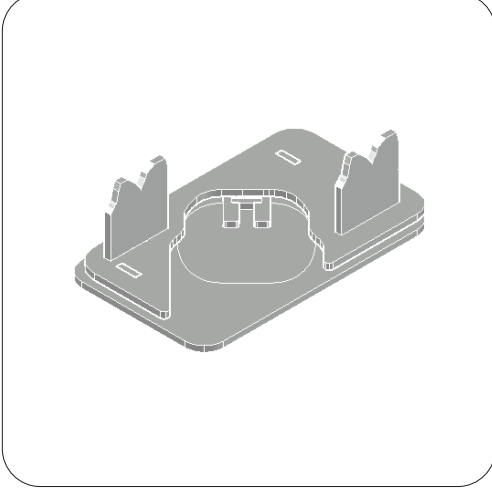
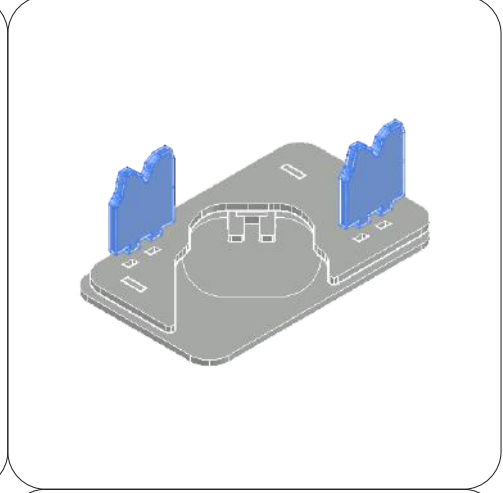
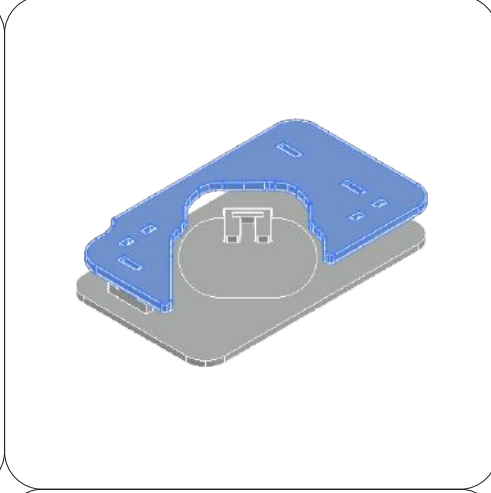
NOTE: The base should be positioned with the engraved side facing upwards.
La base va posizionata con il lato inciso rivolto verso l'alto.

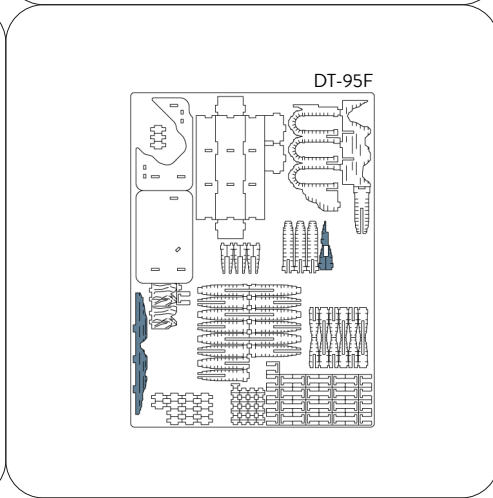
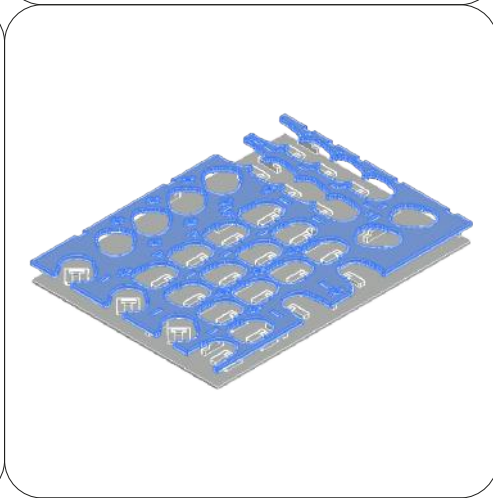
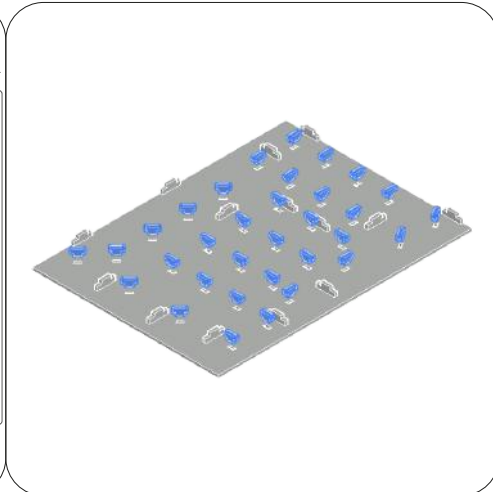
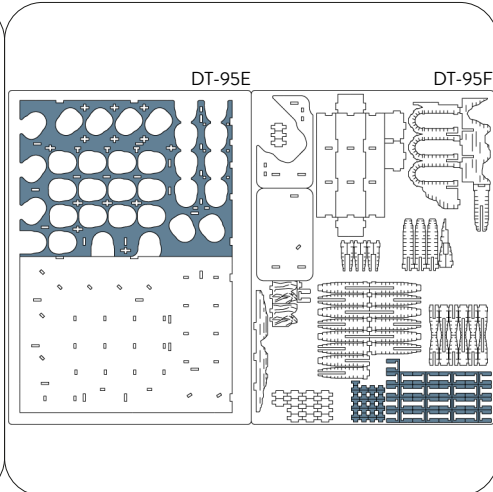
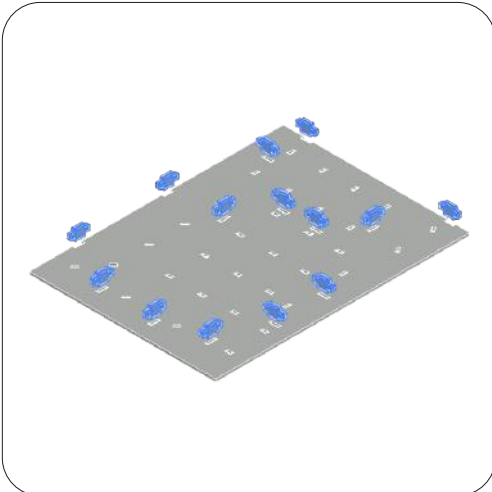




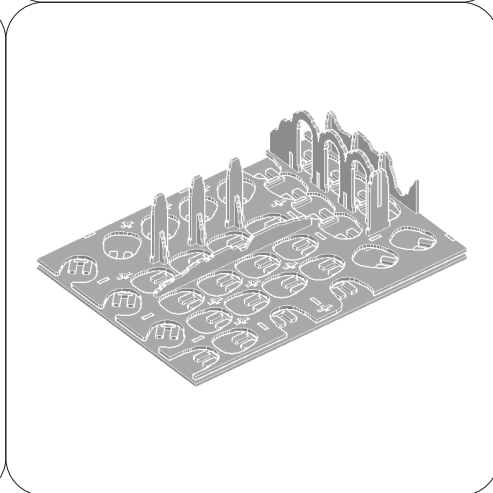
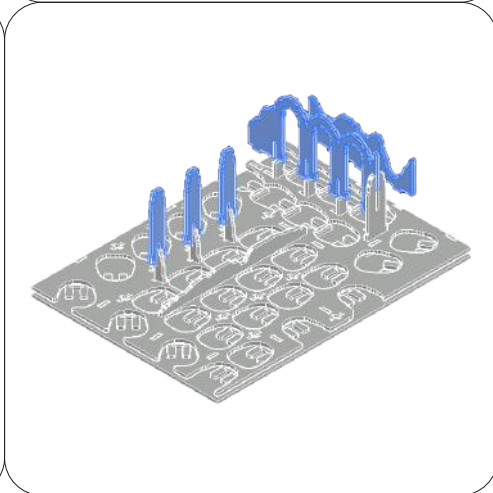
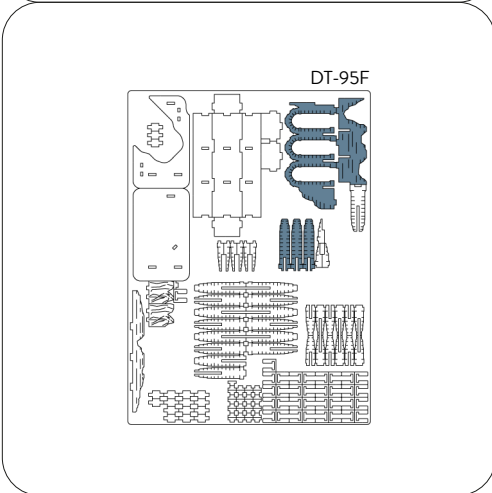
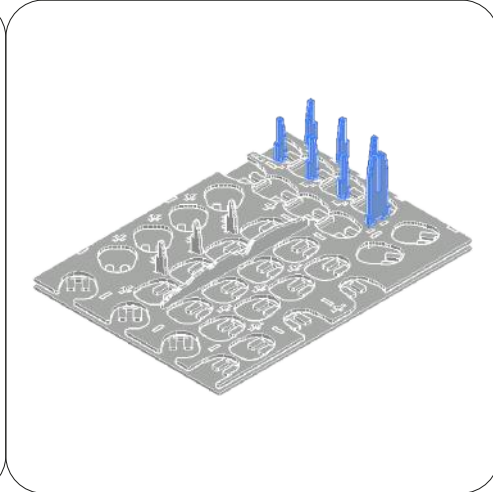
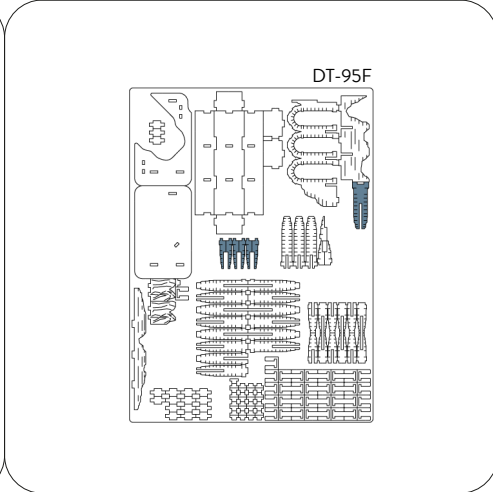
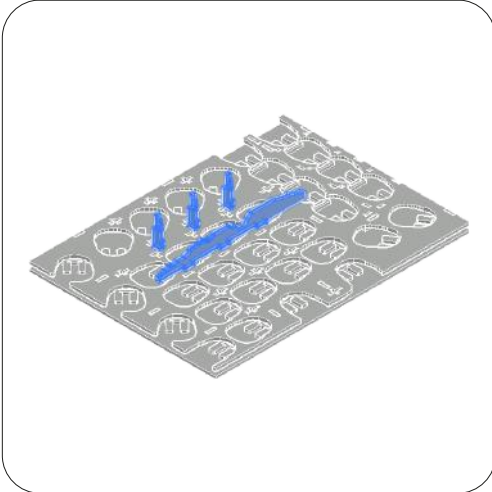


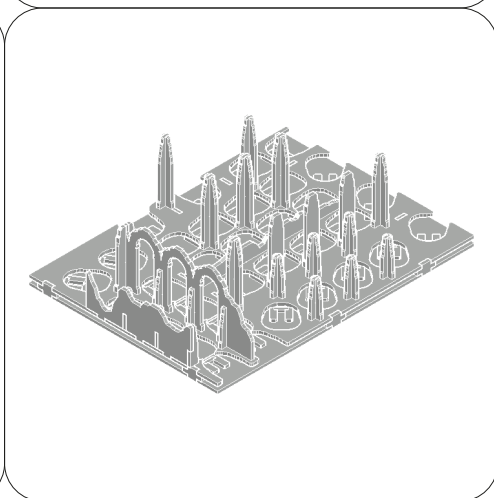
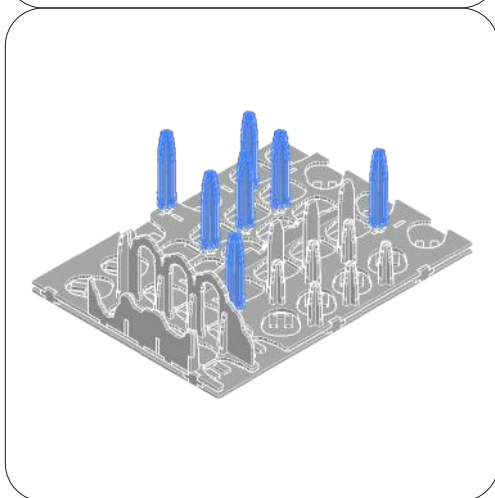
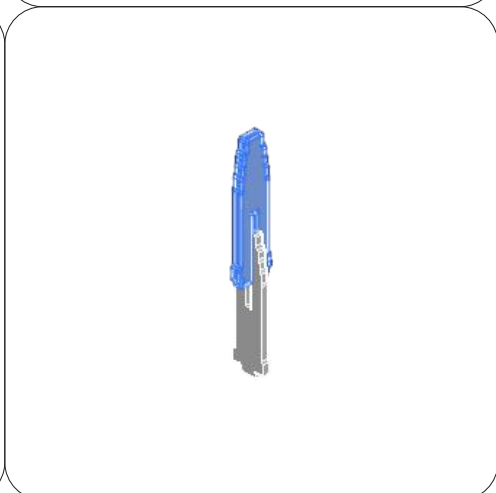
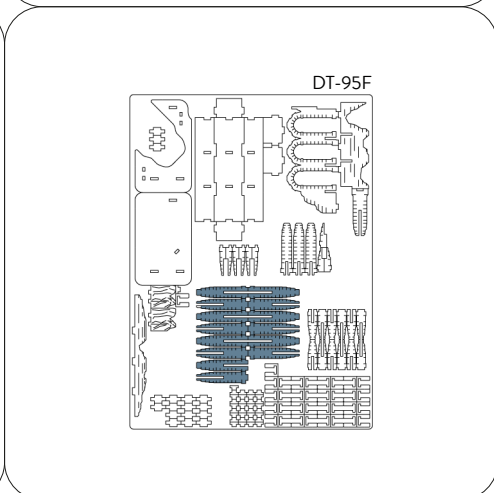
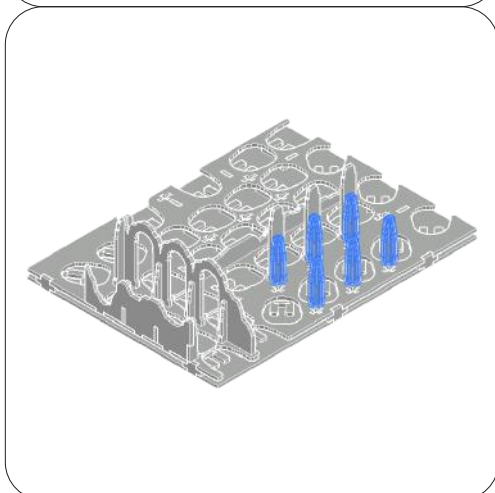
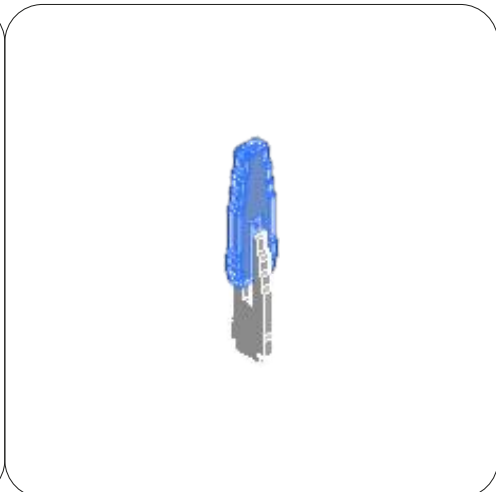
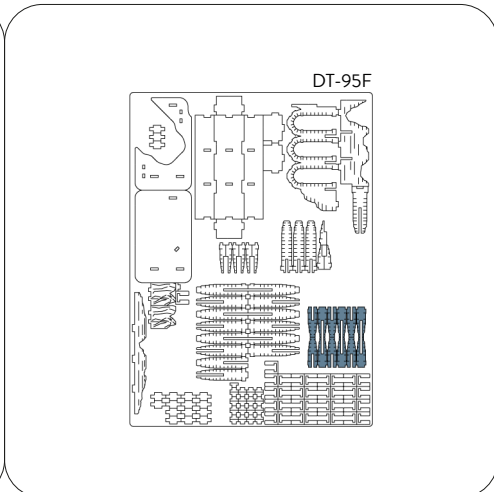
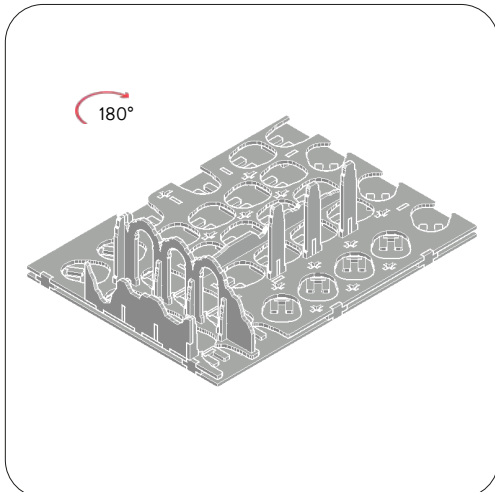
NOTE: Mount this piece facing inward towards the circular engraving. Monta questo pezzo in maniera tale che guardi verso l'interno del cerchio.





NOTE: Mount these pieces facing inward towards the circular engravings. Monta questi pezzi in maniera tale che guardino verso l'interno dei cerchi.





PIECE INSERTION REFERENCE

Please see this reference, which guides you for pieces insertion in our organizer. Pieces without references (eg. coin tokens) have their drawing directly in place. Questa è una guida per l'inserimento dei componenti nei giusti alloggiamenti. Qualora non vi sia riferimento qui, troverete la sagoma del pezzo incisa nello spazio corrispondente.



Wolf
Lupo



Specter
Spettro



Uthuk Blood Witch
Strega dal sangue Uthuk



Hybrid Harbringer
Dragoide Araldo



FAE
Folletti



Zealot
Zelota



Bandit
Bandito



Uthuk Berserker
Berserker Uthuk



Hybrid Centurion
Dragoide Centurione

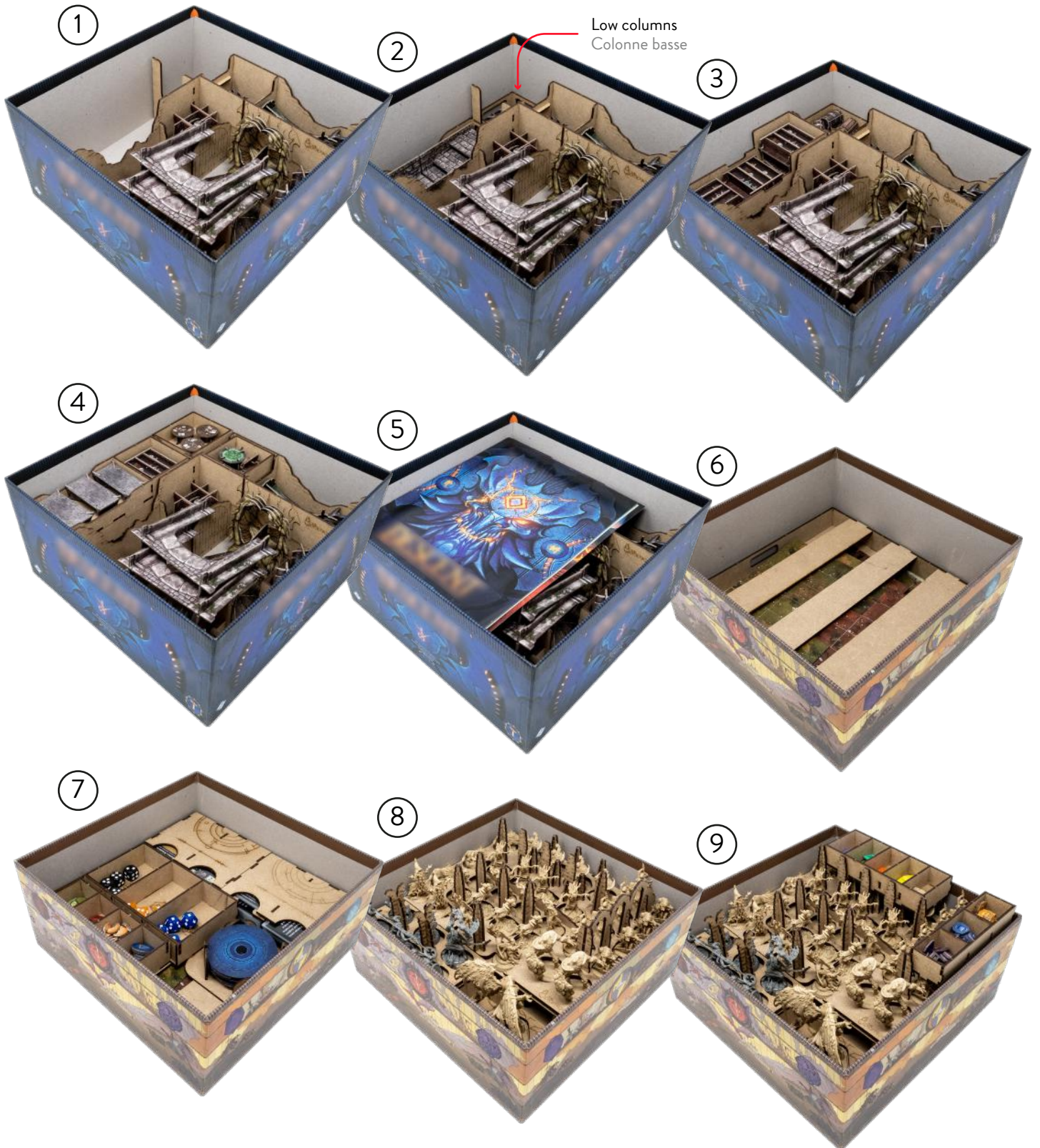


Wight
Wight



Golem
Golem

REBOXING SEQUENCE!



Non-recyclable waste. Smaltire
i materiali di scarto nell'indifferenziata.

All trademarks and copyrights are the property of their respective owners.
This product is not a toy. Contains small parts that can be swallowed or inhaled. 14+