

FS-VIT insert compatible with Viticulture Essential Edition[®],



incl. the Tuscany Essential Edition[®], Moor Visitors[®], and Visit from the Rhine Valley[®] expansions

Assembly Instructions

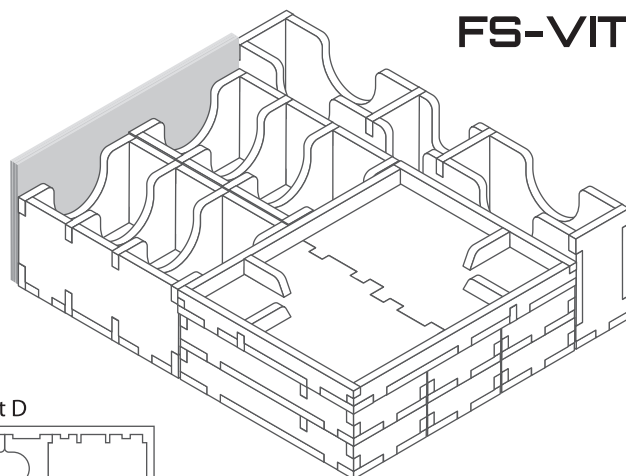
The package contains 4 sheets, two of them are identical to the other two.

After assembly the trays are put in layers in the original game box.

Ordinary PVA glue is required when assembling each tray, for extra strength.

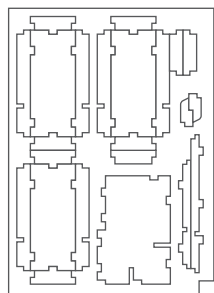
Please make sure you dry-assemble each tray correctly before gluing it together.

Please check www.foldedspace.net for general assembly tips.

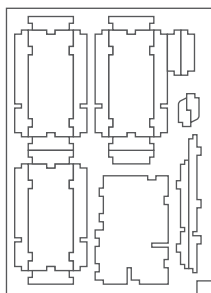


FS-VIT

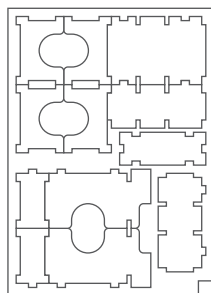
Sheet A



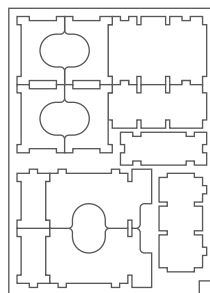
Sheet B



Sheet C

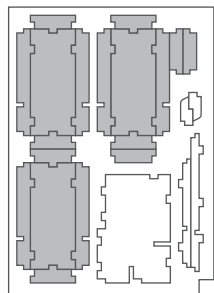


Sheet D

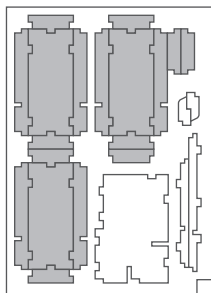


Tray 1a, 1b, 1c, 1d, 1e & 1f (the trays are identical)

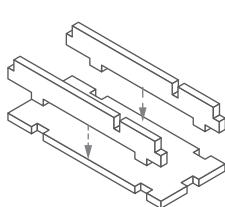
Sheet A



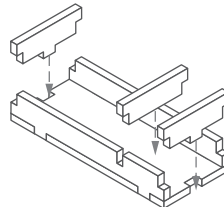
Sheet B



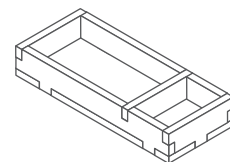
Step 1



Step 2

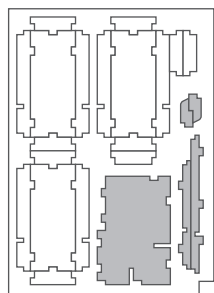


Finished tray

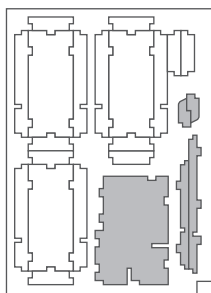


Tray 2

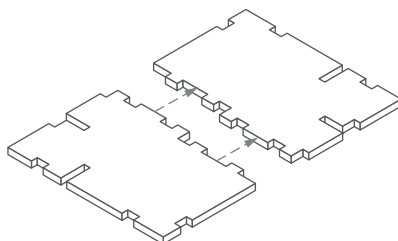
Sheet A



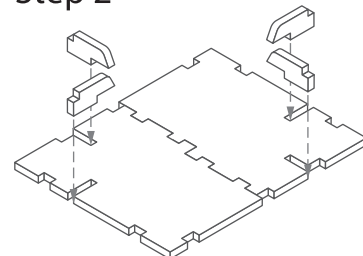
Sheet B



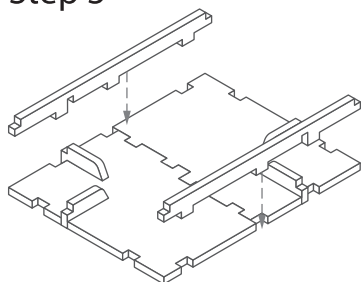
Step 1



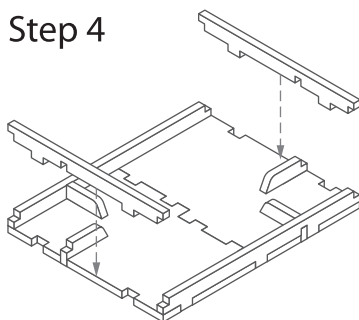
Step 2



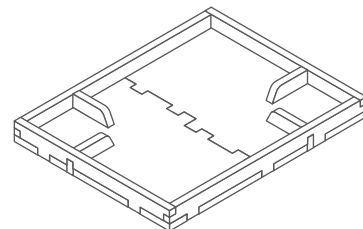
Step 3



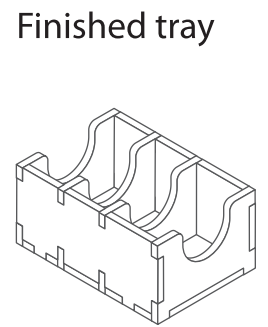
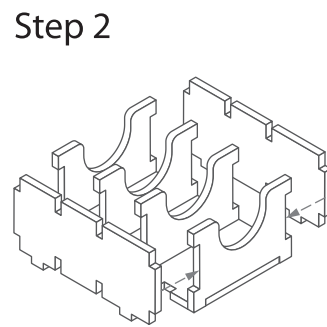
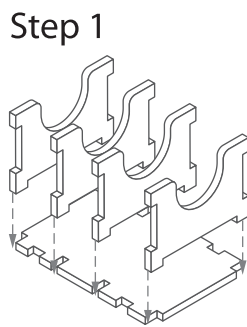
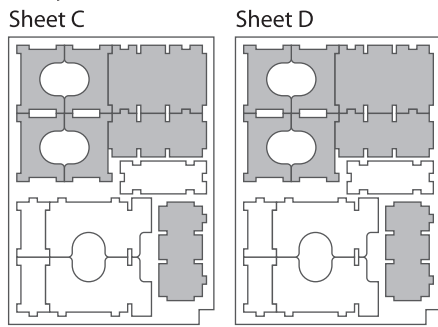
Step 4



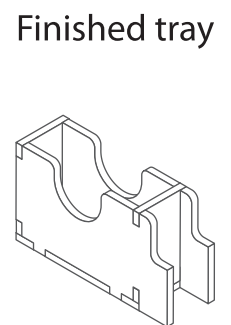
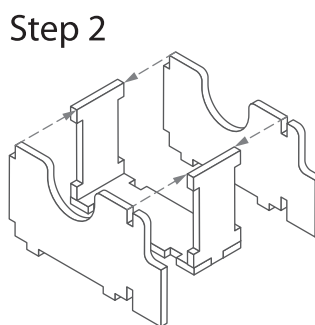
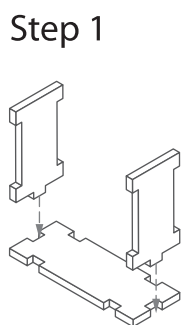
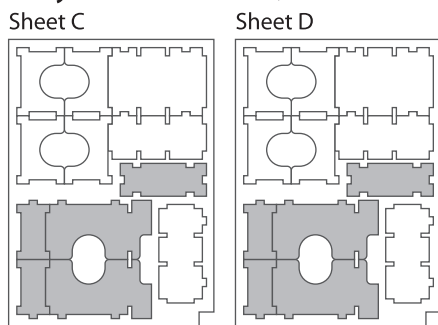
Finished tray



Tray 3a & 3b (the trays are identical)

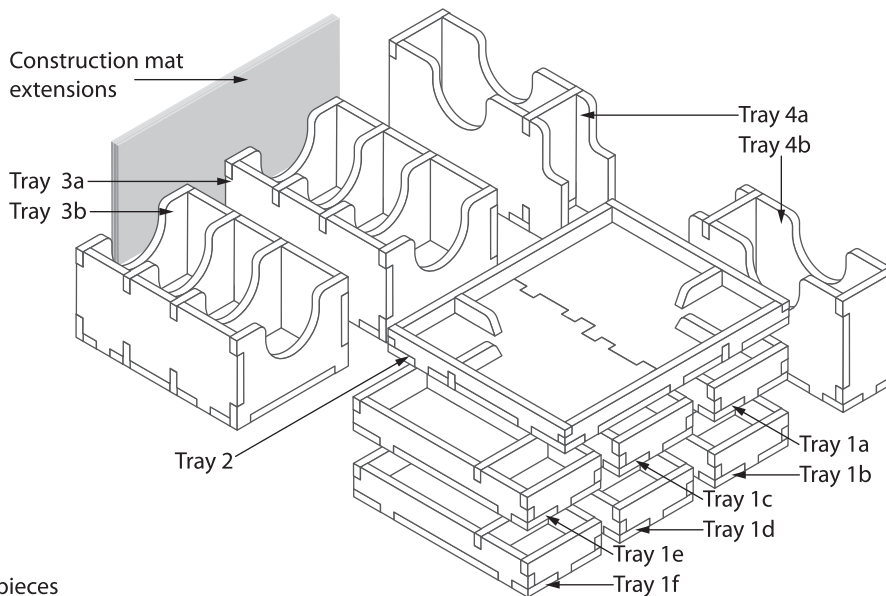


Tray 4a & 4b (the trays are identical)



FS-VIT

Please check www.foldedspace.net
for photos of this insert in use.



Tray legend:

- Tray 1a, b, c, d, e, f - player pieces
- Tray 2 - coins
- Tray 3a - vine and winter visitor cards
- Tray 3b - order and summer visitor cards
- Tray 4a - mama and papa cards
- Tray 4b - field and automa cards
- Space between Tray 4a & 4b - structure cards

Note: This game has a lot of boards. Please check www.foldedspace.net to see how they fit on top of the trays.

Tip: Keep the instructions in the bottom of your board game box as a reminder of how the insert fits together.