

# PICK AND PLAY CARD HOLDER (TRIPLE ROW) - CHERRY BLOSSOM -



4 Pieces to assemble  
Pezzi da assemblare

22.3 x 6 x 1.2 cm



Size once assembled  
Dimensioni assemblato

## TECHNICAL SPECS

1x jig for assembly; 1x triple track card holder. Length of each track: 21.3 cm.

Compatible with all card sizes, sleeved or unsleeved.

1x dima di montaggio; 1x portacarte con binario triplo. Lunghezza di ogni binario 21,3 cm.

Compatibile con tutti i formati di carte, imbustate e non.

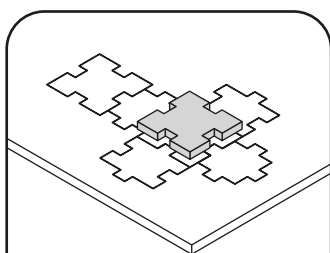


All trademarks and copyrights are the property of their respective owners.

This product is not a toy. Contains small parts that can be swallowed or inhaled. 14+

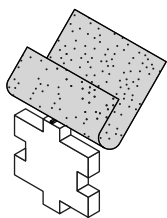
Any doubt?  
Download a full  
digital version on  
[thedigtroyers.com](http://thedigtroyers.com)

1



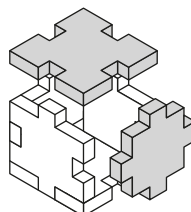
**Gently take off**  
all the pieces.  
**Stacca delicatamente**  
dal foglio tutti i pezzi.

2



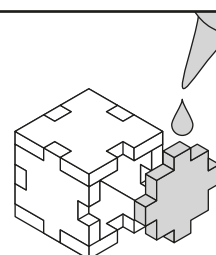
If necessary, **use sand paper**  
to smoothen the borders.  
Se necessario **rifila con carta**  
**vetrata per legno** eventuali  
imperfezioni dei pezzi.

3



Get familiar with  
all the pieces  
and **check the correct**  
**assembly sequence.**  
Prendi familiarità con tutti  
i pezzi, per **assicurarti**  
**che la sequenza di**  
**assemblaggio sia corretta.**

4



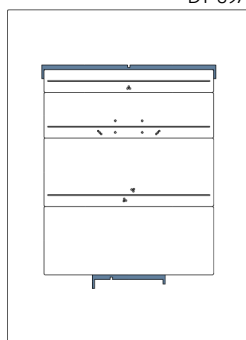
Once verified the correct  
assembly sequence, just add  
a **small quantity of PVA glue**  
on every joint.  
Dopo aver verificato  
la sequenza di assemblaggio  
aggiungi una **piccola quantità**  
**di colla vinilica** su tutti  
gli incastri per garantirne  
la durata nel tempo.

## INSTRUCTIONS

A



DT-89A

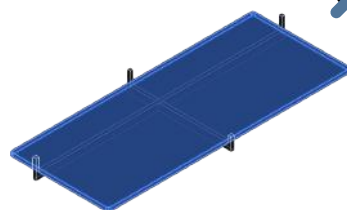
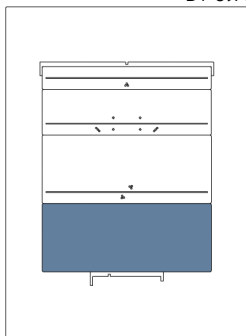


Place the highest pin  
here. Posiziona il perno  
più alto qui.



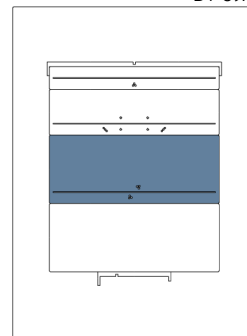
**NOTE:** Assemble the guides first. Don't use  
glue on this step and, during the other steps,  
be careful not to glue the card holder to the  
guides. Per prima cosa assembla le guide. Non  
usare colla su questo passaggio e durante le  
altre fasi presta attenzione a non incollare il  
portacarte alle guide.

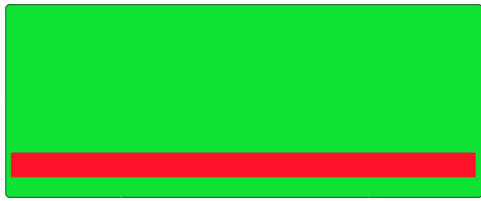
DT-89A



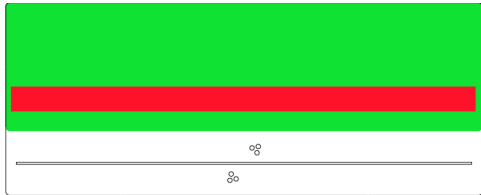
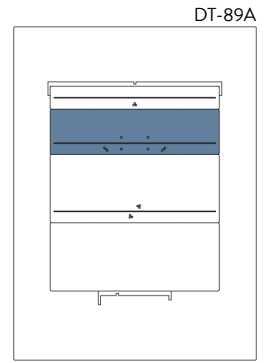
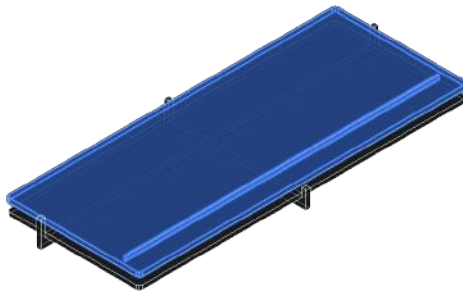
**NOTE:** Don't use glue on this step.  
Place the engraved sides facing upwards.  
Non usare colla su questo passaggio.  
Presta attenzione ai lati incisi, vanno rivolti  
verso l'alto.

DT-89A

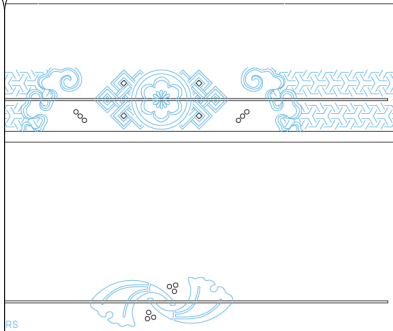




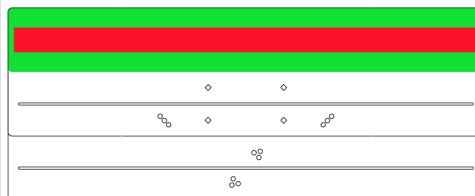
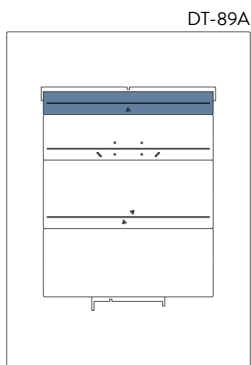
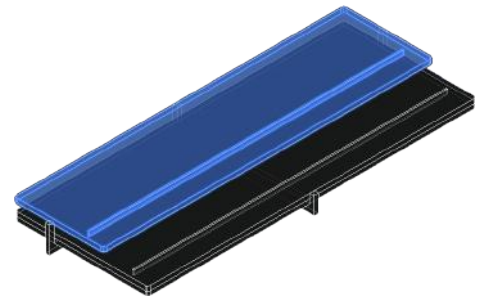
NOTE: Don't use glue on red areas. Stick the area marked in green. Non usare colla sulle aree rosse. Incollare l'area segnalata in verde.



NOTE: Don't use glue on red areas. Stick the area marked in green. Non usare colla sulle aree rosse. Incollare l'area segnalata in verde.



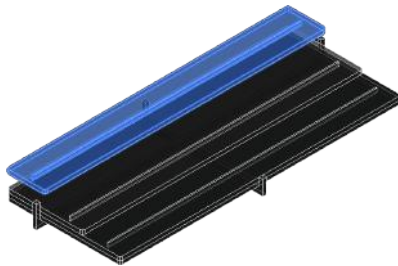
NOTE: Be careful to place the top layer by orienting it as shown in the figure above. Place the engraved sides facing upwards. Presta attenzione a posizionare lo strato superiore orientandolo come mostrato nella figura qui sopra. I lati incisi vanno rivolti verso l'alto.



NOTE: Don't use glue on red areas. Stick the area marked in green. Non usare colla sulle aree rosse. Incollare l'area segnalata in verde.



NOTE: Be careful to place the top layer by orienting it as shown in the figure above. Place the engraved sides facing upwards. Presta attenzione a posizionare lo strato superiore orientandolo come mostrato nella figura qui sopra. I lati incisi vanno rivolti verso l'alto.

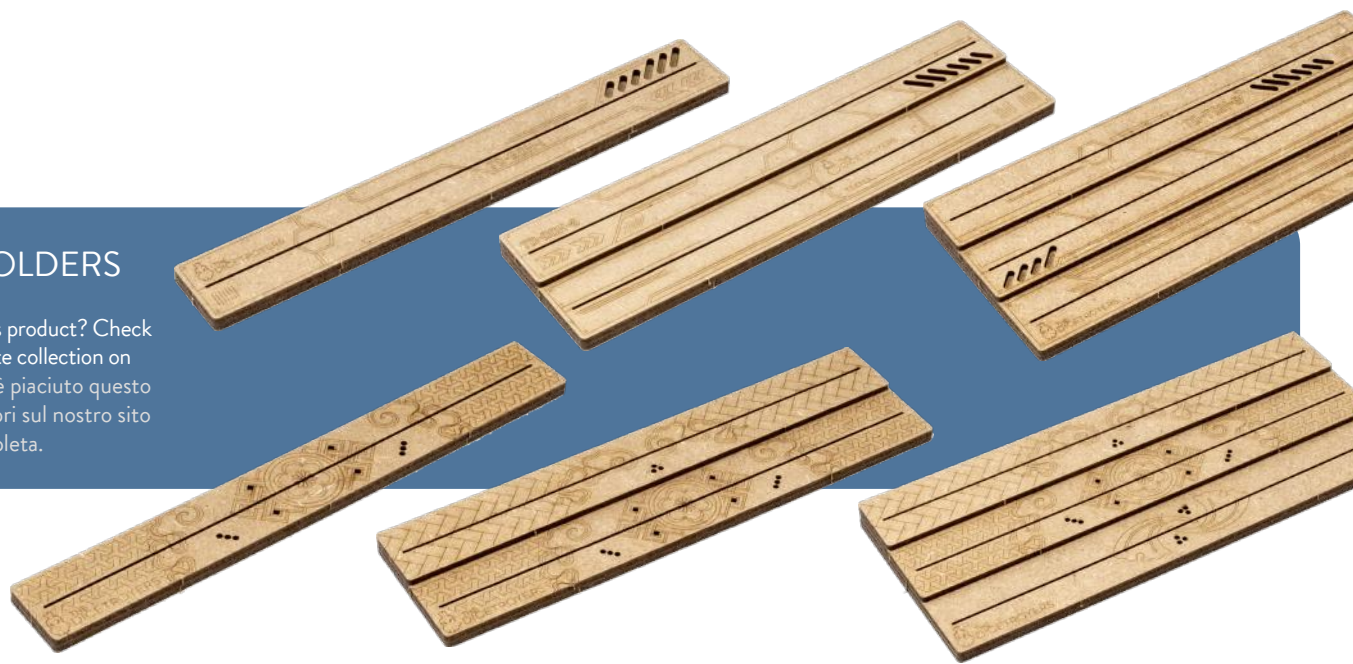


NOTE: Let the glue dry, then remove the guides. Lascia asciugare la colla. Dopodiché rimuovi le guide.



## CARD HOLDERS

Did you like this product? Check out the complete collection on our website! Ti è piaciuto questo prodotto? Scopri sul nostro sito la gamma completa.



Non-recyclable waste.  
Smaltire i materiali di scarto nell'indifferenziata.

All trademarks and copyrights are the property of their respective owners.  
This product is not a toy. Contains small parts that can be swallowed or inhaled. 14+